

vw heritage



GOLF MK1 1974 - 1983 CATALOGUE 2013 ISSUE 1



WWW.VWHERITAGE.COM

vwheritage



QUALITY AND CUSTOMER SERVICE

Welcome to VW Heritage, supplier and manufacturer of thousands of Classic VW Parts.

Buying parts from us is easy. We have a team of enthusiasts, each with areas of speciality, who take pride in their work and are willing to share their time and expertise with you.

Our website is home to over 14,000 parts, new parts are added weekly and if you want to shop online our informative descriptions and photographs are being added daily to make ordering as clear as possible. If you have a question, our online live chat facility lets you talk to an expert who will point you in the right direction or get you the answer you require.

We would love to write here "everything is in stock" but due to the size of our range it is not possible. What we can do is offer a number of alternatives on a large range of our parts or get the part ordered in for you as quickly as possible. Estimated delivery times are indicated online, or your sales person will be able to advise these over the phone.

Of course we are customers too, so we do our best to treat you as we wish to be treated, our service has been accredited by Trading Standards and our generous 3 month returns policy should cater for any parts you bought "just in case".

Keep in touch with us through our Blog and Facebook pages, it's great to interact with our customers and hear your thoughts and comments on our parts, service and what we have been up to in our spare time.

David Ward

Founder and Managing Director

see website for full terms and conditions



ORDER BY PHONE:

0845 873 7288



ORDER ONLINE:

VWHERITAGE.COM



FREE UK DELIVERY ON:

INTERNET ORDERS*

*On orders over £50. Terms and Conditions apply, please see www.vwheritage.com for details



THOUSANDS OF CLASSIC AND PERFORMANCE PARTS FROM THE VW EXPERTS

WHY USE US?

VW Heritage is run by enthusiasts who live and breathe VWs. It's what makes us what we are; Parts Specialists. Got a question? Chances are one of us has asked it too, and now we know the answer! Our warehouse is full with more than 14,000 lines; we should be able to help no matter what your part requirements are.

PRICED TO SELL

£ We strive to have the most competitive prices out there – if you've seen it somewhere cheaper we will aim to beat it... and if we can't it probably means ours is better! All prices include VAT at 20%.

THAT'S NOT RIGHT

? Got a washer when you needed a window? Give us a call and we will get on it straight away. Be it a supplier error or just a plain human mistake, we will do our best to rectify all issues within 24hours.

ERMM, IT SHOULDN'T BE LIKE THIS?

☒ So an elephant's sat on the box? Please, please have a look in it now. Check the contents of every order, if there's a problem to sort we need to know ASAP.

QUALITY PARTS

⚙️ All parts are sold with at least a standard one year warranty* (excluding a few specific items) As much as we would love to say nothing ever breaks – it does happen, so give us a call and we will make sure it gets sorted. Let us have a look too, a picture speaks a thousand words.

DIDN'T NEED THAT BIT AFTER ALL

♻️ Our 30 Days no quibble returns policy is simple. Complete the form on our website or give us a call and we will give you a specific returns number for the unwanted items. Had the part longer? Parts can be returned up to 90 days, subject to a 20% handling charge. See terms and conditions for full details.

COME ON DOWN

🏠 Our doors are open 9am to 5.30pm in the week and 10am to 4pm on a Saturday. If you are making the journey for a specific part why not call us first, we can get it reserved on an order for you so it doesn't sell in the meantime.

SO WHAT NOW

💻 You can order online at www.vwheritage.com from the comfort of your own living room, and with free carriage available on most orders over £35 it's almost too easy! If you have a question, how about calling our mail order hotline 0845 873 9960. We can offer you the advice you need, and if you order before 3pm we can usually get your parts to you by the next working day!

PAYMENT

👉 We accept the following forms of payment:
Cash - Shop customers only • Credit/Debit Card - Visa, Mastercard, Maestro (Switch)
• Bank Transfer by arrangement • Paypal



'Buy With Confidence' Approved Member

VW Heritage Parts Centre Ltd. is an Approved Member of Trading Standards' Buy With Confidence scheme. This means that we have been audited and approved by West Sussex County Council Trading Standards to provide a reliable and quality service. See our website for more details.

A full list of our terms and conditions of sale are available on request. All pictures and drawings in this catalogue are general and may not relate to a specific part. © March 2013 By VW Heritage Parts Centre Ltd. No part of this catalogue may be reproduced without written permission from VW Heritage. Street Style And Power & VW Heritage are trading names of VW Heritage Parts Centre Limited. Registered in England & Wales. Company No.3294341. VAT Number GB 475 7671 01. E. & O.E. All offers/prices are subject to change without prior notice and can be changed at any time.

ENGINE PARTS

10

FUEL

26

EXHAUSTS

28

TRANSMISSION & DRIVETRAIN

30

STEERING & SUSPENSION

32

BRAKES

38

WHEELS

42

CABLES & CONTROLS

46

BODY

50

INTERIOR

64

ELECTRICAL

68

BOOKS & TOOLS

80

INDEX

83



CARRIAGE COSTS

We operate a fast and efficient mail order system.

Delivery prices are shown in the table and include VAT @ 20%. Exports outside Europe are priced individually.

All goods sent by ourselves are fully insured against loss and damage. We make sure you get your parts in perfect condition wherever you are.

On receipt of your parcel, always check the goods before signing. If there are any damaged, missing or incorrect parts we need to know within one working day of delivery. This will enable us to sort out any problem quickly!

A = Normal Orders

B = Glass, Panels, Front Axles & Bumpers

C = Engines, Gearboxes, Complete Bus Front Panels & Bonnets

Glass - Please add £22.60 for a glass box which is refundable if you return the box. Prices correct at the time of going to press.

A = Normal Orders

B = Glass, Panels, Front Axles & Bumpers

C = Engines, Gearboxes, Complete Bus Front Panels & Bonnets

Glass - Please add £22.60 for a glass box which is refundable if you return the box. Prices correct at the time of going to press.

WE HAVE INCLUDED ALL THE PARTS WE STOCK FOR THE MK2 MODEL RANGE AT THE TIME OF GOING TO PRESS. IF YOU CAN'T FIND THE PART YOU NEED PLEASE GIVE US A CALL AS WE MAY HAVE ADDED IT TO OUR RANGE SINCE THE CATALOGUE WENT TO PRESS.

UK Mainland, Scottish Highlands, & Isle Of Wight			
Order Value	A	B	C
Up to £19.99	£4.00	£8.00	£40.00
£20.00 - £74.99	£6.50	£10.00	£40.00
£75+	£9.50	£16.50	£40.00

Scottish Islands, Northern Ireland, Channel Islands, Scilly Isles & Isle of Man			
Order Value	A	B	C
Up to £19.99	£4.00	£15.50	£80.00
£20.00 - £74.99	£9.50	£17.50	£80.00
£75+	£12.50	£22.50	£80.00

Eire, Belgium, Luxembourg, Germany & France			
Order Value	A	B	C
Up to £19.99	£8.00	£22.50	£80.00
£20.00 - £49.99	£13.50	£31.00	£80.00
£50.00 - £99.99	£20.00	£35.00	£80.00
£100.00 - £249.99	£27.00	£52.00	£80.00
£250.00 +	£32.00	£68.00	£80.00

Other European & Worldwide destinations - please call our sales team for a quote

NEED ANOTHER CATALOGUE? GET YOUR FREE COPY TODAY

Request yours today and we will send it to you right away! Ghia, Beetle, Split Bus, Bay, T25, T4 & MK2 catalogues. All the restoration parts you could need for your VW in similar detail to this catalogue. Please note the Karmann Ghia catalogue is just for Ghia specific parts, and now only available as a download.



ONLINE AND ON THE MOVE!

All parts are available on our website and on our mobile site for use with smart phones, great for in the garage or out on the show field.



HOW TO USE THIS CATALOGUE

With so many different parts available it can be confusing trying to work out the parts you need. We have tried to make this as clear as possible with comprehensive diagrams and photographs. Below is a breakdown of our price panels so ordering the correct part is straight forward and hassle free.

Number of Diagram / Photograph	Title & Description of Parts	Part Number	Guide Letter	Unit of Sale	Price
1	Rear brake caliper, left	535-615-423	G	each	£142.80
2	Rear brake caliper, right	535-615-424		each	£142.80
	Bolt, caliper to carrier	321-615-141		each	£5.50
	Bolt, caliper carrier to rear hub	N01-991-23		each	£3.95
4	Backing plate, >7/88, left	191-615-611		each	£29.94
	Backing plate, >7/88, right	191-615-612		each	£29.94
5	Backing plate, 8/88> left	191-615-611/D	M	each	£29.94
	Backing plate, 8/88> right	191-615-612/D	M	each	£29.94
6	Bolt, for backing plate to stub axle >7/88	N90-369-801		each	£3.90
	Bolt, for backing plate to stub axle 8/88>	N04-475-53		each	£0.85
7	Washer, for above	321-501-119/A		each	£0.50

Key To Guide Letters

G = A Genuine VW Part.

M = A part manufactured by VW Heritage.

X = An exchange part - a deposit (surcharge) will be required until the old unit is returned.

Various other guide letters may occur throughout this catalogue and these are specified on the individual page.

Abbreviations Used In The Catalogue

NCA = Not Currently Available - This part has been included as we believe it may become available in the future.

NLA = No longer available.

TBA = To be announced - This is a brand new product.

Call = The price and supply of this part can fluctuate please call for a quote.

CARING FOR THE COMMUNITY...

At VW Heritage we enjoy interacting with our customers, many of whom become friends over time.

Whether you are local to us and able to attend our Heretics meets, or you join in the fun on Facebook, it is always good to hear your feedback and see what you have been up to with your Volkswagen projects.



We can also be found on a number of internet forums for Volkswagen and VAG vehicles, and model specific clubs too.

We are proud to be the official parts supplier to the Golf Mk2 owners club.

We are very lucky in the UK, being spoilt for choice with VW shows to attend during the spring and summer months. Keep an eye on our website or Facebook page for where we will be next.

We normally discount parts ordered for collection at shows, and offer discount and free delivery for any parts order taken at the show.

For those needing to know more about a part you are more than welcome to come along and pick our brains too.

Have a say in what we do!

We have built up a great rapport in a number of forums with members around the world.

We are always interested to hear what parts you find hard to source, which ones you wish you could get, and if you have any ideas for something fresh and new.

A great example of this is our best quality chrome bumpers and exclusive black powder coated versions too. You asked for them so we produced them!

Why not join up on one or more of the following, and add to the conversation. You never know, the parts you need might just get made because of you!

www.facebook.com/vwheritage

www.edition38.com

www.clubgti.co.uk

www.vwgolpmk1.org.uk



RUN BY ENTHUSIASTS, FOR ENTHUSIASTS

This is a snapshot of the VWs currently owned by some of our staff at VW Heritage.

Because we are VW owners and drivers, we understand why quality is important and with our many collective years of experience owning and working on VWs, we will help you

through your restoration or repair job with technical advice and, most importantly, by supplying the right parts on time.



David - Managing Director
'83 Mk1 Golf, 1100cc 28,000 miles from new, completely standard



Barney - Sales Director
VW Heritage hand built Mexican Beetle, 1600cc, Lowered, SSP Cosmics



Paul - Purchasing Director
'87 T25 Caravelle model, 11 seater, 1.9 Wbx



Mark - Operations Director -'99 T4 Caravelle Lowered, 16" Borbet B Alloys, Bonnet Bra, Leather seats.



Nick - Sales Manager - '62 US Spec Beetle Original Gulf Blue paintwork, Rag top, SSP BRM's



Ben - Sales. '69 Bay Microbus California import, Savannah Beige, planned big motor install, lowering



Nigel H - Engine Specialist
'72 GT Beetle, 2.1 DJ Waterboxer, Emerald ECU, TMI interior, 125bhp



Andy - Marketing
'76 Polo L, lowered 60mm, 15" Fooks alloys, rebuilt 895cc, full body resto



Dave - Goods In
Golf GTI MK2, standard, leather interior and air con



James T - Sales
'66 Beetle, sea blue 1641cc homebuilt turbo motor, Gasburners



Dave - Web
'65 beetle, SSP GT5s, narrowed beam, TMI Interior, 1600cc



Ben - Sales
'69 Beetle 1766cc, line-loc, Berg shifter, discs, Porsche replicas



Anna - Sales
'90 MK2 VR6 with BBS RM wheels and Rallye front end



Gary - Ebay Sales
'69 Porsche 356A with rebuilt 1720cc 912 engine



Alex - Ebay Sales
'69 Deluxe, Cali Import, 2276cc, FK10, 48 IDFs, Line Loc, Built 091 G/Box



Laurent - Sales. Type 3 Fastback DIY restoration, repaint in Savannah Beige, 1641cc motor



Andy - Sales
'91 GDT model Golf - standard except G60 steering wheel



Joel - Returns
'67 Beetle, 1300cc single port, dropped spindles, Empi 5s, 2nd owner from new



Tara - Purchasing
'72 Beetle, fully restored, 1600cc, silver Empi 8s



Jamie - sales
Polo Mk4 1400cc lowered on 15" Deep Dish alloys, leather, Spax exhaust

UNDERSTANDING YOUR GOLF MK1

The Golf Mk1 (Typ 17) was launched to the public in May 1974, just six months after the debut of the Scirocco at the Geneva motor show.

The Scirocco, sharing its chassis with the forthcoming Golf worked as a test bed for any teething problems while on general sale, paving the way for the Beetle's successor to be unveiled as a known quantity to Volkswagen and its dealers.

A year later in September 1975, an after hours project conducted by some of VW's development engineers came to fruition with the Golf GTI being put on display at the Frankfurt Motor show. However all those keen to get their hands on it would have to wait, until the following June when 5000 models were put into production, enough to homologate it for use in motorsport. Produced in LHD only up until 1979 the GTI had limited appeal in the UK, sales figures spiked from just 22 in 1978 to 1500 in 1979 with the launch of the RHD GTI.

The earliest examples of the Golf are referred to as a "Swallow Tail" due to its pronounced dip below the rear number plate; these models also featured drum brakes (later recalled for a disc upgrade) and a smooth bonnet, and are considered the ones to have for many enthusiasts. This styling only lasted a year, with the swallow tail rear panel being smoothed out accentuating the gap between the small tail lights, which remained until 1980.

The much sought after chrome bumpers made way for wrap around plastic items in time for the 79 models to be on sale. Other upgrades for the 1980 model included the "series 2" dashboard, GTI models lost the original chequered cloth interior in favour of vertical stripes. In 1982 The GTI got a bigger engine, the 1588cc was replaced by the new 1781cc, although the power remained almost the same, torque and acceleration was improved.

The MFA, on board computer system was introduced in 1982, and a version of this has been used in GTI models ever since.

The last year of Mk1 "tin top" production saw the original GTI bow out with the Campaign model. Made from August 83 onwards, they are fitted with the iconic 14" Pirelli alloy wheels; leather bound steering wheel, green tinted glass and a factory sliding sunroof as some of their distinguishing features.

The Golf was marketed under a few different

names; the Americans refer to the Mk1 as a Rabbit, it is called the Caribe in Mexico and was later referred to as the Citi Golf in South Africa, where it remained in production until 2009.

Sharing its underpinnings with the Mk1 Golf is of course the Cabriolet model, and the saloon Jetta; also included in this list is the Scirocco Mk1 and Mk2, and the Caddy to some extent.

The Cabriolet model was first introduced to VW by Karmann in 1976 however it didn't make it to production until late 1978, or early 79 depending who you trust!

The Cabriolet model (Typ 155) only underwent minor changes up until 1988 when the "Clipper" body kit was fitted. The bumpers were made deeper and were body coloured, the wheel arches extended with bigger plastic trims which then flowed into the side skirts. The front grille was updated to reflect the newer style of Mk2 Golf grille, was fitted with centre spot lights as standard.

The convertible Golf took the accolade of being the world's most popular convertible car in June 1991, and eventually ran until 1993 with the Sportline and luxury Rivage models being the "run out" editions, and subsequently highly sought after today.

The Jetta (Typ 16) was introduced to cater for the American market initially, offered in the US and Europe as both a 4 door saloon, and a 3 door Coupe, the Jetta was only ever sold in the UK as a 4 door saloon. The Mk1 Jetta had a relatively short production run, from August 79 through to February 84 with 571,030 vehicles produced from the German Wolfsburg factory, and later at the TAS (Tvornica Automobila Sarajevo) factory in Bosnia.

The Caddy (Typ 14) was launched to the US in 1980, manufactured at the Westmoreland plant, although in the US it was branded the "Rabbit pick up" to avoid confusion with the locally produced Cadillac cars.

In Europe the Caddy was sold from 1982, being produced at the TAS plant in Bosnia, it was also manufactured in South Africa until 2007.

Like the Cabriolet, and the Scirocco models, it outlasted the tin top by quite some years, remaining on sale in the UK until 1992.

The Scirocco pioneered the Golf's chassis and engine in 1974, and the Mk1 model (Typ 53) designed by Giugiaro was to be the

successor to the much loved Karmann Ghia.

The Mk1 style was given a plastic bumper facelift in 1978, and continued in production at the Karmann factory until 1982, with just over 500,000 being manufactured in total.

In 1982 the Mk2 Scirocco (Typ 53B) was launched, while it lost 5mm in height it gained 33cm in length and 2cm in width over its predecessor.

The Mk2 remained on sale in the UK until 1992, the last few years alongside its replacement the Corrado. In the USA and Canada the Scirocco was replaced when the Corrado was released in 1988/89.

Engine Codes

Code (Mk1 Engines)	CC	KW
2H	1800	72 DIGIFANT
CK	1600	37 DIESEL
CR	1600	40 DIESEL
CY	1600	51 TURBO DIESEL
DX	1800	81 K JETRONIC
EE*	1600	60
EG	1600	81
HT*	1500	77 K JETRONIC
EJ*	1600	61 K JETRONIC
EN*	1800	61 K JETRONIC
EW	1600	55
EX	1800	66
FA	1100	37
FD	1500	63
FG*	1500	55
FH	1500	51
FK	1500	51
FL*	1500	55
FN*	1600	55
FP	1600	55
FR	1600	63
FV	1600	48
FX*	1500	46
GF	1300	44
GG	1100	37
GH	1500	48
GX*	1800	66
HT*	1800	77 K JETRONIC
JB	1500	51
JH*	1800	70
JK	1600	40 DIESEL
KR	1800	100 16V
PF*	1800	79 DIGIFANT
PL*	1800	95 K JETRONIC
RD*	1800	79 K JETRONIC
RV*	1800	77 DIGIFANT



VW HERITAGE, VOLKSWAGEN CLASSIC PARTS DISTRIBUTION IN THE UK

VW Heritage is the UK partner for Volkswagen Classic Parts, Wolfsburg. This means we have direct access to over 40,000 parts direct from the VW Warehouses in Germany.



VW Heritage represents a gateway to the parts stash of your dreams. Think of a part you need and give us a call or check availability on our website. If you have the old part number then even better!

After trawling the world collecting obsolete stock from dealerships and forgotten warehouses, VW Classic Parts have granted us direct access to the fruits of their labour.

Whether it is a single screw or a side panel, a headlamp or a hose VW Classic Parts could have that elusive part to help finish your project.

Since announcing the partnership almost 2 years ago, our perception of later models has evolved. Volkswagen considers these models to be classics now, and we are actively promoting this too with our latest catalogue for the Golf Mk1 as VW Heritage founder David Ward explains.

"It is so important for the future of VW Heritage that we continue to build our range of parts and move with the times. The global following for the Golf is unquestionable, and it was a natural progression for us to bring a complete offering for these vehicles to compliment our existing range for classic VWs.

We are no longer just an air-cooled parts company.

Our partnership with VW Classic Parts has really helped us

to expand and take note of models that might not of been covered by us in our core range of parts but still have original parts available for them. Yesterday's daily driver is today's classic car, and we've had a few of those here!

You might not drive a Golf, but this doesn't mean we can't help you. This partnership is great news for owners of all older Volkswagens, Polos to Passats, Ventos, Variants, Sciroccos and Santanas we will try to help you all. Give our team a call with a part number or a description, and we will do our best to find the part you need."

Cartsen Thrandorf, International Sales Director at VW Classic Parts has reinforced his commitment to VW Heritage with some great news.

"We are expecting to reproduce 500 original parts in the next 5 years, and we firmly believe our partnership with VW Heritage will go long ways to making sure these are the "right parts" to manufacture, and that they are available to the enthusiasts who really need them.

In VW Heritage we have found a company with 25 years experience and a strong team of knowledgeable enthusiasts who are able to offer the level of service that is expected by existing and new customers of the VW brand. We can only look forward with anticipation and excitement to the future of this partnership."

VW HERITAGE BECOMES A TÜV ACCREDITED PARTS MANUFACTURER!

Having recently passed the strictest of audits for German TÜV Quality Management Processing, we are proud to say VW Heritage is now a certified and approved TÜV manufacturer.



With this coveted TÜV approved production standard, we have been able to receive TÜV certifications on all our SSP Cosmic wheels, and we plan for more TÜV certified wheels to follow very soon!

What is it all about?

The German Ministry of Transport only accepts non-standard parts installed on cars which are tested and certified by the German TÜV. This certification process is well known for its very high safety requirements and is enforced by the German TÜV and the German Police force.

Our intention is to manufacture SSP wheels to comply fully with TÜV requirements for use in the German market.

Whilst this is great news for our German customers, for those that the TÜV doesn't yet apply to, it is a guarantee of maximum durability and safety with regards to fitment as passed and approved by the TÜV Certification Tests.

What does this mean for you?

Although currently only legislation in Germany, there are drafts made for an EU-wide TÜV testing system that will become standard in mainland Europe and set to head across the channel to the UK in the next few years. TÜV approval will be required for all non standard additions you make to your vehicle.



ENGINE PARTS

Want to change the engine in your 1100-1300cc model to something bigger? You'll need to weld an extra engine mount in place!

Need ignition parts? Check out our full range in the electrical section.



What size engine do you have? Is it Petrol or Diesel?

Running problems? Spray your inlet manifold and carb base gasket with WD40 while it's running - if the engine note changes you've got an air leak!



Engine Oil, 15W/40, 5 litre, ML-005 £21.80 each



Anti Freeze / Coolant, G-012-A8G-M1 £9.90 each



Quantum Synta, ZGB-115-QLB/S £20.95 each



Carb Cleaner, ML-011 £7.20 each



Screenwash G-052-164-M2 £5.00 each

BEARINGS

1 Main Bearings 1050-1300cc and 1600-1800cc including Diesel / Turbo Diesel >87

Std x Std x Std	068-198-491	each	£49.95
0.25 x Std x Std	068-198-493	each	£49.95
0.5 x Std x Std	068-198-495	each	£49.95
0.75 x Std x Std	068-198-497	each	£49.95

1600-1800cc 87> Including Diesel / Turbo Diesel, 16v and G60
You will also require thrust washers 026-198-421 for the standard kit below

Std x Std x Std	026-198-491/A	each	£0.00
0.25 x Std x Std	068-198-493	each	£49.95
0.5 x Std x Std	068-198-495	each	£49.95
0.75 x Std x Std	068-198-497	each	£49.95

2 Big End Bearings 1050-1300cc

Std	030-105-701/G	each	£25.95
0.25	030-105-707/G	each	£25.95
0.5	030-105-713/G	each	£25.95
std	056-105-701	each	CALL
0.25	056-105-707	each	CALL
0.5	056-106-713	each	CALL

1600-1800cc including 16v and G60 DX,JJ,EW,HN

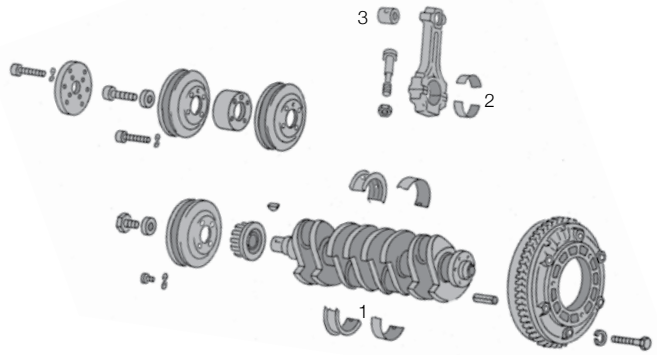
Std	034-105-701	each	£29.95
0.25	034-105-707	each	£29.95
0.5	034-105-713	each	£29.95

Diesel and Turbo Diesel

Std	033-105-701	each	£35.00
0.25	033-105-707	each	£49.95
0.5	033-105-713	each	£29.95

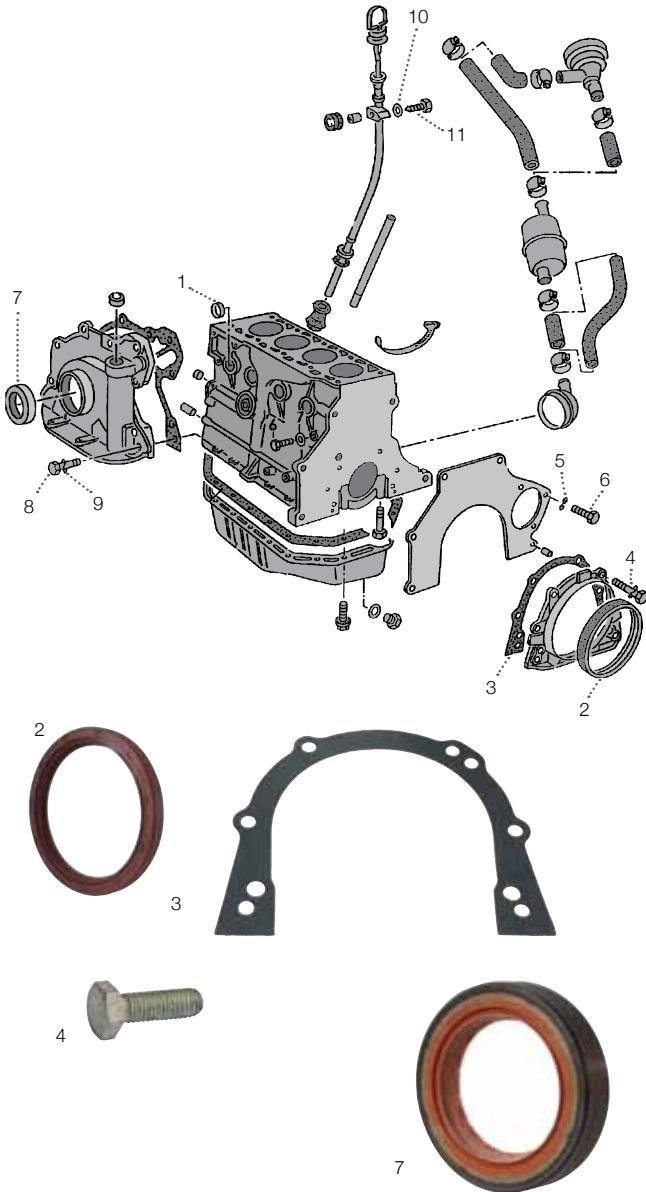
3 Small End Bushes

1050-1300cc	052-105-431	each	£17.95
1600-1800cc inc 16v	026-105-431	each	£17.95
1800cc G60	056-105-431	each	£17.95
Diesel / Turbo Diesel	069-105-431/A	each	£17.95



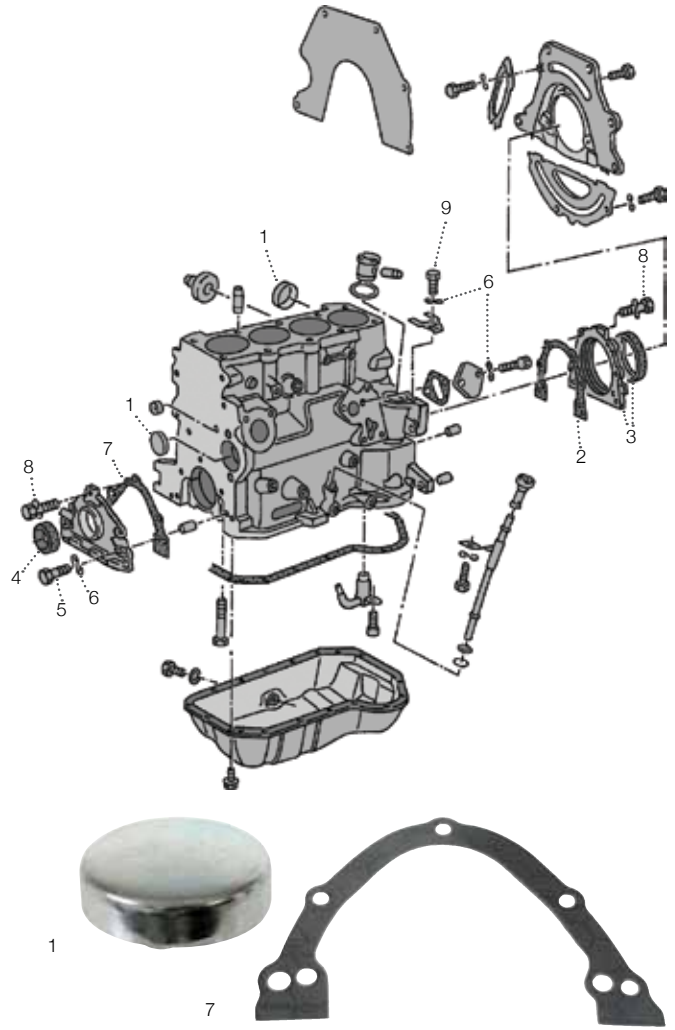
Main bearings			
1	std.	026-198-491	each £41.90
	0.25	068-198-493	each £49.95
2	Big end bearings - D/TD	033-105-701	each £35.00

ENGINE BLOCKS 1050 - 1300CC



1	Core Plug, 36.6mm	036-103-113/A	each	£1.20
2	Crank Seal, with flange	068-103-171/F	each	£17.00
3	Crank Oil Seal Housing Gasket	026-103-181/B	each	£2.80
4	Bolt, M6 x 18	N01-021-612	each	£1.10
5	Washer, 7 x 14 x 0.8	N01-223-45	each	£0.50
6	Bolt	N01-022-76	each	£0.60
7	Oil Seal, Crankcase 47 x 10	068-103-085/E G	each	£21.70
	Oil Seal, Crankcase, repro 47 x 10	068-103-085/ER	each	£3.30
8	Bolt	n01-021-710	each	£1.70
9	Spring Washer, 6mm	N01-222-65 //	each	£0.50
10	Washer, A6.4 x 12.5 x 1.6	N01-152-423	each	£0.30
11	Tapping Screw, Hex head	n01-594-61	each	£0.80

ENGINE BLOCKS 1600 - 1800CC INC. DIESEL



1	Core Plug, 36.6mm	036-103-113/A	each	£1.20
2	Gasket, crankseal housing	026-103-181/B	each	£1.30
3	Crank Seal, with flange	068-103-171/F	each	£17.00
4	Oil Seal, Crankcase	068-103-085/E G	each	£21.70
	Oil Seal, Crankcase repro	068-103-085/ER	each	£1.10
5	Bolt, M8 x 20	N01-024-016	each	£0.80
6	Spring Washer, 8 x 15 x 0.8	N01-224-110	each	£0.40
7	Gasket, Flange front	026-103-161/B	each	£1.70
8	Bolt, M6 x 18	N01-021-612 G	each	£21.70
9	Bolt, M8 x 25	N01-024-222	each	£0.80

DIESEL



	Gasket for fuel pump block off	028-127-311/A	each	£2.45
	Bolt for above, M8x18	N01-471-211	each	£0.50
1	Washer for above	N01-222-65	each	£0.50
2	Crank seal 1.6 / 1.7D	068-103-051/G	each	£7.00



SUMPS



	1050-1300cc	030-103-601/E	each	£39.00
	1600-1800cc >7/87	055-103-601	each	£28.00
1	Sump, 1600-1800cc all models 8/87-7/92	051-103-601	each	£25.00
2	Sump, 1600 turbo diesel	068-103-601/L	each	£68.20
3	Sump Bolt, all models	N90-288-901	each	£2.20
	Sealing Washer, for above	N01-384-92	each	£1.10
	Sump Gasket, 1600-1800cc	044-103-609/D	each	£6.00
	Sump Gasket, 1050-1300cc	032-103-609/B	each	£5.50
	Sump 88>, 1600 1800cc	051-103-601	each	£25.00
	Sump plug - all models	N90-288-901	each	£2.20

OIL PUMPS



1	1000-1300cc, >7/85	052-115-105/A	each	£81.90
	1000-1300cc, 8/85>	030-115-105/D	each	CALL
2	1800cc, 16v models	027-115-105/C	each	£41.40
	Oil pump 1500-1600cc	027-115-105	each	£44.00

OIL FILTER



1	Petrol all models	056-115-561/G	each	£7.00
2	Diesel all models	068-115-561/B	each	£7.00

DIPSTICKS & GUIDES



1	Seal for 1500-1600cc >7/82	059-115-625	each	£0.50
2	Dipstick 1600-1800cc 8/82>	027-115-611/C	each	£3.90
3	Guide Tube for 1600-1800cc	053-103-663	each	£1.25
4	Dipstick diesel all years	068-115-611/P	each	£7.70
5	Guide Tube for Diesel	036-115-636	each	£2.80

OILS & FLUIDS



1	Servol 15w/40 multigrade 5 litres	ML-005	each	£21.80
2	Quantum Synta , semi-synthetic 10W40, 5L	ZGB-115-QLB/S	each	£20.95
3	Gearbox Hypoid 80-90W , 1L	ZGB-115-QLB/GEAR	each	£8.50
	Antifreeze, G13 (safe with all AVG coolants) 1.5L	G-012-A8G-M1	each	£9.90
	Screenwash , lemon scented, Genuine VAG, 1L	G-052-164-M2	each	£5.00

UPGRADES & CUSTOM PARTS

PERFORMANCE CAMSHAFT



Piper Cams

Golf GTi 8v Pre-1986 With Mechanical Tappets, Cam Kit

Fast Road, Gains of up to 10bhp WC109KBVG270 each **£467.60**

Ultimate Road, gains of up to 14bhp WC109KBVG285 each **£446.00**

Golf GTi 8v Post-1986 With Hydraulic Tappets, Cam Kit

Fast Road, gains of up to 10bhp WC109KBVG270H each **£467.60**

Ultimate Road, gains of up to 15bhp WC109KBVG285H each **£446.00**

Ultimate road and rally WC109KBV16V285H each **£823.10**

WC109KBV16V300H each **£823.10**

Golf G60/Rallye, Cam kits

Fast Road, gains of up to 10bhp WC109G60BP270H each **£391.40**

Ultimate Road

gains of up to 18bhp (ideal with pulley and chip)

Golf GTi 16v, cam kits WC109G60BP285H each **£391.40**

Fast Road, gains of up to 12bhp WC109KBV16VBP270H each **£823.10**

UPGRADES & CUSTOM PARTS

VERNIER PULLEYS

PIPER CAMS



8V GTI/G60

Black WC109PULDGTI each **£152.20**

Blue WC109PULDGTIB each **£134.40**

Red WC109PULDGTIR each **£134.40**

16v Gti

Blue WC109PULDV16 each **£134.40**

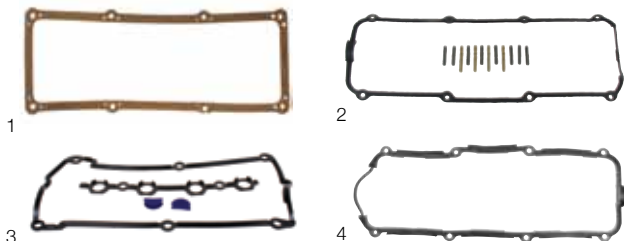
Competition cambelts

1.5/1.6/1.8/8V GTI/G60 WC109TBP23 each **£45.20**

1.8 16V WC109TBP25 each **£51.60**

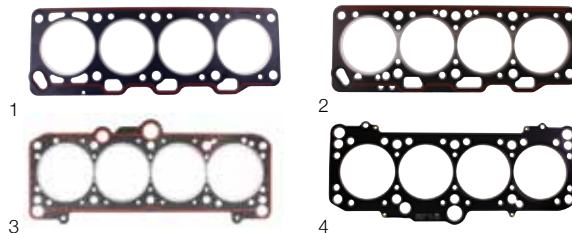


ROCKER COVER GASKETS



1	1000-1300cc, 2/74-7/85	052-103-483/C	each	£21.00
2	1500-1800cc, not 16v, cork w/half moon seal	026-198-025/A	each	£3.50
3	1800cc 16v	027-198-025	each	£12.00
4	G60	037-103-483/C	each	£6.00
	Diesel and Turbo Diesel 1.6/1.7	056-103-483/D	each	£2.80
	Sealing strip	056-103-489/A	each	£0.60
	Halfmoon seal	049-103-491	each	£0.60

HEAD GASKETS



1	1100 7/76-7/83, 1300 >7/79	052-103-383/J	each	£26.90
2	1300cc, 8/79-7/83	030-103-383/M	each	£12.00
3	1600-1800cc 83>, all models inc. 16v, exc. G60	026-103-383/P	each	£12.00
4	G60	037-103-383/L	each	£40.00
	1500-1600 -8/75-7/83	049-103-383/A	each	£13.20
	1500cc	049-103-383/K	each	£26.90
	Diesel / TD	068-103-383/FN	each	£21.00

OIL BREATHERS



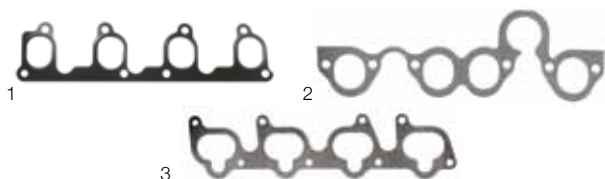
1	Breather 1000-1300cc, metal in block	036-103-129	each	£19.30
1	Oil Separator, plastic, 1000-1300cc, 85-91	052-103-495	each	£26.00

HEAD BOLTS



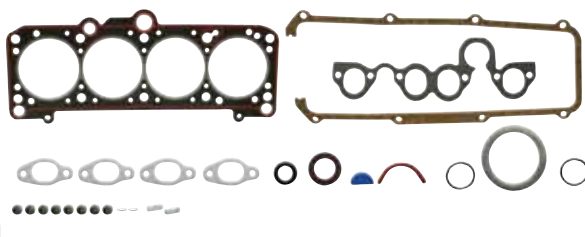
1	1100-1300cc	049-103-385	each	£12.00
2	1500-1800cc	049-103-384/B	each	£11.50
	1800cc 16v	027-103-385/A	each	£23.95
	Diesel >8/79, M11 x98mm	056-103-385/A	each	£15.00
3	Diesel, 79>, M12 x115mm	068-103-384/A	each	£20.00

INLET MANIFOLD GASKETS



1	Water heated manifold 1000-1300cc	030-129-717/D	each	£3.00
	Air heated manifold 1000-1300cc	036-129-717/A	each	£3.00
2	1500-1800cc, all exc. 16v	026-129-717/D	each	£3.00
	Sealing washer, for above	035-121-171/C	each	£1.25
	Upper gasket 1800cc, 16v	027-129-717/D	each	£7.00
3	Lower gasket 1800cc, 16v	037-129-717/F	each	£2.75
	Diesel, all models	068-129-717/E	each	£2.80

HEAD GASKET SETS



	1100-1300cc	NCA	each	NCA
1	1600-1800cc, 83-91, all petrol exc. 16v/G60	027-198-012/L	each	£41.00
	1800cc, 16v, 85-91	027-198-012/H	each	£65.00
	Diesel, 1.6/1.7	068-198-012	each	£49.96

OTHER GASKETS



	Crankcase Gasket Set			
1	1600cc	037-198-011/C	set	£46.00
	1800cc 16v	051-198-011/A	set	£110.20
	Engine gasket sets			
2	1300 79-83	052-198-001/M	set	£79.80
	Decoke set, Diesel	068-198-012/L	set	£28.80
	Gasket & Clamp, for exhaust manifold, 1500-1800 carb.	161-298-115	each	£9.00

DOWNPIPE GASKETS



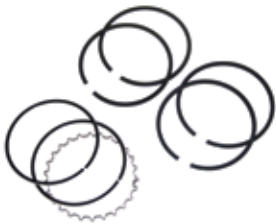
1	1100-1300cc	036-253-115/A	each	£4.50
	1500-1600cc	841-253-115/B	each	£4.40
2	1600-1800cc GTI	055-253-115/A	each	£5.00
3	1800cc, 16v, 85-91	533-253-115/C	each	£6.50
	1600cc, Diesel, 83-91	893-253-115	each	£3.95

DIESEL VACUUM PUMP PARTS



1	Repair Kit , for vacuum pump valve	068-198-819	kit	£11.00
2	Diaphragm , for vacuum pump	068-198-821/A	each	£8.80

PISTON RING SETS



Note: These are sold per piston, you will need 4 to make a complete set. Please call if you can't see what you require.

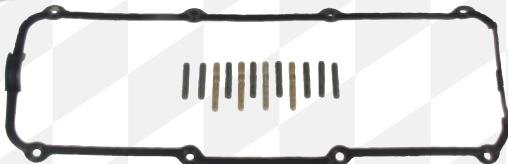
1300cc , GF Engine Code, 1x Piston/Set 75mm	052-198-151/C	set	£50.10
1600cc , EG Engine Code 79.5mm	049-198-151/F	set	£25.80
1600cc , EW / HN Engine Code 81mm	026-198-151/B	set	£25.00
1800cc , DX / JJ Engine Code 81mm	026-198-151/A	set	£24.00
1600cc , Diesel / T.Diesel 76.5mm	068-198-151/C	set	£79.00

OIL FILLER CAP



1	Oil Filler Cap , all models	026-103-485/A	each	£2.75
2	Oil deflector	026-103-547	each	£5.00

UPGRADES & CUSTOM PARTS MK3 PARTS/UPGRADES



Piston Ring Set , 2000cc, 2E/ABF code, 82.5mm, 1x Piston/Set	053-198-151/C	set	£62.30
Mk3 8v Rocker Gasket Set 1600-1800cc, With Studs use to convert from cork Without Studs replacment rubber gasket	026-198-025/C 051-103-483/A	set set	£10.50 £9.90

CAM FOLLOWERS & VALVES



	Valve lever , manual adjustment, 1100-1300cc	052-109-443	each	
	Ball headed adjusting screw , 1100-1300cc	052-109-449	each	
1	Valve collets, 2 per valve , 1100-1300cc	113-109-651/A	each	£0.95
	Hydraulic 8/74 >7/85 1500-1800cc	056-109-311/A	each	
2	Hydraulic 8/85- 1600-1800cc	034-109-309/AD	each	£12.10
	Valve stem oil seal			
	All except 16v	026-109-675	each	£0.95
	16v	027-109-675	each	£0.95
3	Valve guide except 16v	056-103-419/A	each	£7.70

CAM BELTS & CAM BELT KITS



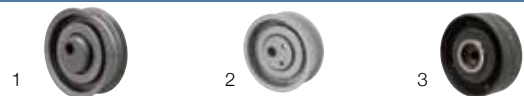
	1100-1300cc, 8/74-90	052-109-119	each	£8.00
	Cambelt kit with tensioner			
1	1500-1800cc, carb & injection, all models inc.G60	026-109-243/E	kit	£17.20
	1600cc, Diesel, 8/76-7/91	068-109-119/E	each	£15.00
2	1800cc, 16v	027-109-119/A	each	£21.00

CAM BELT COVERS



	1500-1800cc, 8/79-7/91 Outer lower	049-109-175	each	£9.00
1	1500-1800cc 8/79-7/83, Outer Upper	055-109-107/B	each	NCA
	1500-1800cc, petrol, all exc. 16v/G60 87-91. Outer Upper	026-109-107/B	each	£6.95
2	1500-1800cc, petrol, all exc. 16v/G60 87-91. Inner Upper	026-109-173/A	each	£8.80
3	1800cc, 16v, Upper	027-109-123/B	each	£46.50
	1800cc, 16v, Lower	027-109-174	each	£30.00

CAM BELT TENSIONER



1	1500-1800cc 8v	026-109-243/L	each	£18.00
2	1800cc, 16v	051-109-243	each	£23.00
3	Diesel, 76>	068-109-243/F	each	£18.00

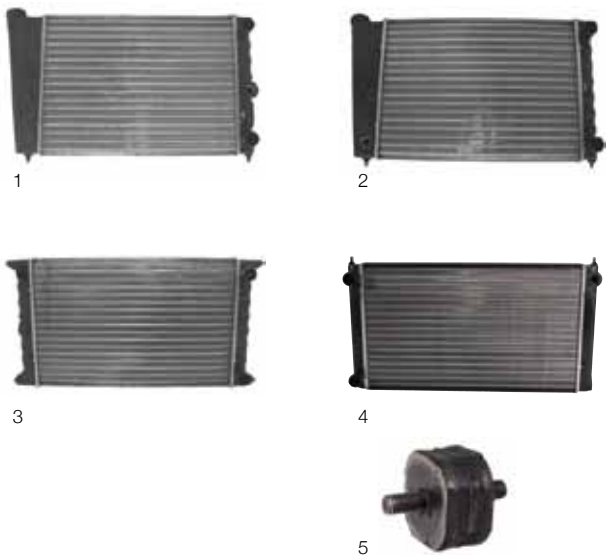
CAM CHAIN 16V



1800cc 16v	027-109-120	each	£8.00
------------	-------------	------	--------------



RADIATORS



1	1100-1300cc, 1/81-1/83, 430mm top fill	171-121-253/AD	each	£99.60
2	1500-1600cc, 430mm, top fill	171-121-253/BD	each	£119.00
3	1600-1800cc Cabriolet, 430mm	191-121-253/D/K	each	£45.00
	1500-1800cc inc. Diesel, 480mm	171-121-253/D	each	£104.00
4	1600-1800cc Cabriolet / Diesel, 525mm	321-121-253/AL	each	£50.00
	1600 Caddy Diesel, 570mm	171-121-253/CL	each	
5	Radiator rubber mouting	171-121-275/E	each	£5.00

HEATER MATRIX



Heater Matrix 171-819-031 each £14.90

For more heater parts please see page 76

OIL HOSE



Half inch hose, black AC1159282 per mtr £14.00
 Half inch hose, stainless braided AC1158822A per mtr £26.90

OIL COOLERS



1	1600-1800cc GTI models -7/83	113-117-021	each	£47.00
2	1600-1800cc inc Diesel 8/84-	068-117-021/B	each	£41.00

HEADER TANKS



1	All models where fitted	171-121-407/F	each	£12.00
2	Cap for above	171-121-321/C	each	£3.50

UPGRADES & CUSTOM PARTS REMOTE OIL COOLERS



1	24 Row cooler kit (37.5x75x275mm)	WC1179299	each	£80.00
2	48 Row cooler kit (37.5x144x275mm)	WC1179278	each	£89.00

WATERPUMPS



1	1100-1300cc all years	052-121-004	each	£25.00
2	1500-1600cc petrol >7/81, Diesel >4/82	026-121-010/A	each	£35.00
	1600-1800cc petrol 8/81>, Diesel 4/82>	037-121-010/C	each	£39.95
3	1500-1800cc, all models -Internals only, No Housing	026-121-005	each	£24.95
	1600 Diesel, 1/81-7/85	068-121-005/C	each	£19.20

WATERPUMP PULLEYS



Please call if your vehicle has Air Con or PAS

Pulley wheel				
	1500-1800cc	056-121-031	each	
1	1600/1800cc inc GTI 8v	026-121-031	each	£6.00
2	1800cc 16v Diesel	027-121-028	each	£54.80
		068-121-031	each	£33.30

THERMOSTATS



Thermostats				
1	1100-1300cc >7/78	036-121-113	each	
	1100-1300cc, 8/78-7/83	036-121-113/B	each	£6.60
	1600-1800cc, 83-91	056-121-113/D	each	£6.00
	Diesel, 84>	044-121-113	each	£5.00
Seal				
	1100/1300cc models	052-121-119	each	
2	1500-1800cc inc Diesel, 50mm dia.	038-121-119/B	each	£1.25

THERMOSTAT HOUSING



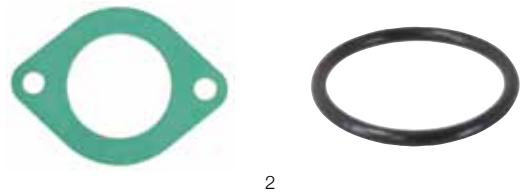
Thermostat housing				
	1100-1300cc	NLA	each	NLA
	Flange for above	052-121-121/D	each	£19.50
1	1500-1800cc inc Diesel (take off on bottom of waterpump)	055-121-121/F	each	£3.50

WATER FLANGES



Water Flanges				
	1600-1800cc	026-121-133/C	each	£0.00
1	1600-1800cc, Cabriolet/Caddy/ Scirocco 8/89-	037-121-132/B	each	£6.10
	1600-1800cc, all models 8/81-	026-121-144/E	each	£4.50
	1800cc Gti	026-121-144/F	each	£4.50
2	1800cc Carb, Cabriolet with oil cooler	037-121-133/C	each	£6.10
	1800cc, 16v, 2/86-10/91	027-121-133/E	each	£6.60
	1800cc, 16v	027-121-145/B	each	£4.50
	All Diesel	068-121-133/M	each	£5.00
	1600cc Diesel, Caddy 8/90-7/92	068-121-132	each	£6.95
3	Clip for push in sender	032-121-142	each	£1.70
	Seal for above	N90-316-802	each	£1.70
4	Sender hole block off kit	357-198-140/S	each	£7.20

GASKETS AND SEALS



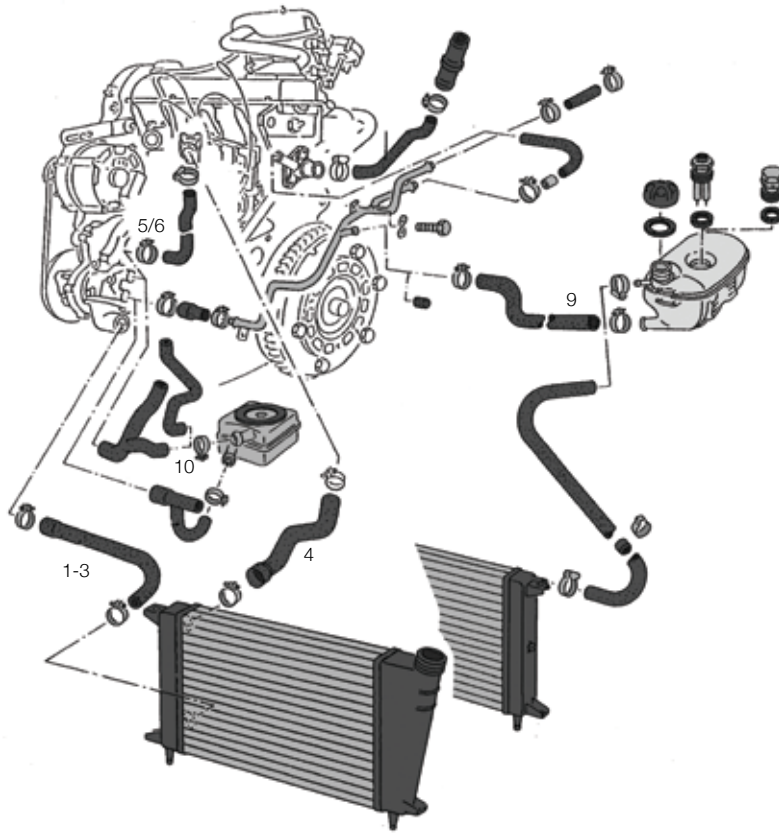
Gaskets				
1	1100, 1500-1600cc Diesel, 8/82- 07/90	052-121-091/A	each	£1.70
	1800cc 16v	027-121-139/A	each	£2.20
2	O ring, 36mm diameter	037-121-687	each	£5.00



CAN'T SEE THE PART YOU NEED LISTED?

CHECK THE PART NUMBER ONLINE IT MIGHT BE AVAILABLE FROM VW CLASSIC PARTS.





HOSES



Bottom radiator hose			
1	1100-1300cc, >7/82	171-121-051/L	each £11.00
	1100-1300cc, 8/83>	171-121-051/J	each CALL
2	1500-1600cc	171-121-051/B	each £9.90
3	1600-1800cc Carb/GTI/Diesel	171-121-051/G	each £9.90
Top radiator hose			
4	1100-1300cc	171-121-101/N	each £10.50
	1500cc/1600cc carb 1/81-7/83, 1.6 GTI 76-82	171-121-101/E	each £9.90
	1600cc/ Diesel	171-121-101/AH	each £14.00
	1600-1800cc Carb / Diesel	533-121-101/F	each £9.90
	1800cc GTI	533-121-101/F	each £9.90
5	Water pump to flange, 1500-1600cc	056-121-053/B	each £7.20
6	Water pump to head, Diesel exc TD models	068-121-053/M	each £11.00
7	Engine to heater, 1500-1600cc	171-121-611/AN	each £6.10
8	Water pump to metal pipe, 1500-1800cc	055-121-063/A	each £23.00

9	Water hose, Exp tank to metal pipe, G1 1.5/1.6/1.6D/1.6 GTi	171-121-109/E	each £5.50
	Metal water pipe to thermostat head, 1100-1300cc	036-121-054/B	each CALL
	Thermo valve to inlet manifold or cylinder head, 1500-1600cc	049-121-123/A	each CALL
	Wax stat to inlet manifold, 1600cc carb	027-121-057	each £6.45
	Water hose, pump-oil cooler, Golf Mk1 1.6D/TD, Cabrio 1.6+*	068-121-058/M	each CALL
10	Water pump to oil cooler/head, 1600cc D/TD	068-121-053/P	each £14.00
	7mm Coolant hose, Genuine VW, per meter	443-101-107/A	meter
	Water hose to heater matrix. 2 required	171-820-371/B	each £13.14

METAL WATER PIPES



Waterpipe			
	1100cc	036-121-065/F	each
1	1500-1600cc inc GTI -7/82	055-121-065/M	each £23.60
2	1600-1800cc carb 8/82-1800cc GTI 8/83-1800cc GTI (JH code only)	027-121-065	each £19.00
		055-121-065/M	each £23.60
		027-121-065/A	each

HOSE CLIPS AND FITTINGS



Screw type			
1	12-22mm	N01-640-11	each £1.70
	16-27mm	N01-640-21	each £1.70
2	20-32mm	N01-640-31	each £1.70
	23-35mm	N10-258-101	each £2.80
3	25-40mm	N01-640-41	each £1.70
	30-45mm	N01-641-01	each £2.20
4	Connecting pipe, 15mm Diameter	171-121-140/D	each £3.60

UPGRADES & CUSTOM PARTS

SAMCO HOSES



	Blue	Black	Clips		
1	1600cc Coolant	WC121TCS35/C	WC121TCS35/C/BLK	WC121CK35/C	each £21.50
1	1800cc Coolant	WC121TCS36/C	WC121TCS36/C/BLK	WC121CK36/C	each £24.70
2	1600-1800cc Ancillary	WC121TCS5/C-A	WC121TCS5/C-A/BLK	WC121CK35/C-A	each £24.70
	G60 Supercharger hoses, 3 piece set	WC121TCS136	WC121TCS136/BLK	WC121CK136	each £26.90



**UPGRADES
& CUSTOM PARTS**

WEBER REPLACEMENT CARB KITS

	1100cc , 74-79, 4 stud, replaces Solex 31 PIC	WC12915290994	each	£171.10
1	1100cc , 79-84, 2 stud, replaces Solex PICT	WC12915290991	each	£184.80
	1300cc , 80-84, replaces Solex 34 PIC	WC12915290992	each	£192.10
	1300cc , 83-90, replaces Pierburg 2E3	WC12918870975	each	£254.40
2	1500cc , 77-80, replaces Solex PICT	WC12915290993	each	£192.10
	1500cc , 79-84, replaces Pierburg 2B3	WC12915310802	each	£170.10
	1600cc , 83-91, replaces Pierburg 2E2	WC12922670916	each	£310.00
3	1800cc , 83-91, replaces Pierburg 2E2	WC1292267092	each	£324.40

CARB REBUILD KITS



	Solex Carb Rebuild Kit	036-198-569/S	each	£26.90
1	Pierburg Carb Rebuild Kit	049-198-571/S	each	£40.80

STANDARD CARB FLANGES



	1000-1300cc , 8/83-7/85	052-129-765/B	each	£29.10
1	1100-1300cc , 8/79-12/83	052-129-765/A	each	£9.50
2	1300cc , 8/83-10/91	052-129-765/E	each	£19.00
	1500-1600cc , 74-80	055-129-761/C	each	£19.30
3	1600cc , >4/78, Ch. No.>028-657	055-129-761/B	each	£23.60
	1600cc , 4/78-12/83, Ch. No.028-657>	049-129-761	each	£20.40
	1600-1800cc , 8/83>	026-129-761/A	each	£24.50

CHOKE SPARES AND CABLES



	Choke Pull Down Unit			
	1600cc , Engine Codes: Ew, EZ >9/84, GU >7/85,	026-129-220	each	£10.00
1	1600-1800cc , Engine Codes: EZ 10/84>, GU 8/85>, RF, ABN	030-129-220/A	each	£10.00
2	Replacement Choke Cable for Weber Carb	WC129WCC	each	£18.30
3				

vwheritage **OEM PLUS**

VW are proud to offer our new range of OEM Plus products for the Mk1 Golf, Jetta, Caddy and Scirocco models. Manufactured in partnership with some big names in the performance tuning industry we are confident these parts will be just to your taste and requirements.



Engineered for optimum performance and driving experience without compromising the original design of your classic VW.

Coilover Kits

OEM+ Coilover Kits

Exclusively engineered by German suspension gods KW, these factory black bodied, black spring coilovers offer full height adjustment while relying on expert pre set damping to ensure maximum comfort.



Prices from - £599.00

Bush Kits

Polybush Bush Kits

We have an exclusive partnership with British bushing gurus Polybush. These bushings, produced in the darkest of grey material, won't spoil the original look of your classic VW, will give you an improved driver feel, and last a lot longer than original rubber bushings too.



Prices from - £14.95

Suspension Kits

Spring & Shock Kits

Produced by KW Germany, as part of their Weitec range, we have taken their popular suspension kits and produced them with factory black springs, to compliment better the classic lines of your VW.



Prices from - £385.00

Anti Roll Bars

Anti Roll Bar Kits

Finish off your OEM plus suspension overhaul with Weitec's anti roll bar kits, finished in our signature factory black.



Prices from - £295.00



WAX STATS



1600-1800cc, wax 'stat 027-129-243 each **£61.80**

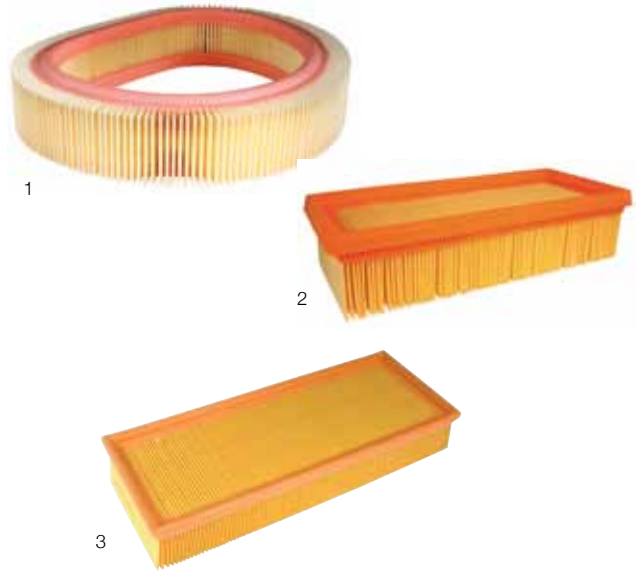
AIRBOX MOUNTS/ SPARES



1

1500-1800cc, 8/75-10/91, exc. Gti	443-121-273	each	£4.40
1 Gasket, Airbox to Fuel metering head, Gti K-Jet	049-133-379/A	each	£9.40
Valve for airbox, 1600-1800cc carb	035-129-630/B	each	£48.40

STANDARD AIR FILTERS



1

2

3

1100cc >5/75	113-129-620	each	£5.50
1 1100-1300cc, 5/75-12/83	052-129-620	each	£5.00
1300, 8/83>	056-129-620	each	£5.50
1500cc, >7/75	113-129-620	each	£5.50
2 1500-1800cc, Carb 8/77>	055-129-620/A	each	£6.60
1600-1800 Gti/ Gti, >12/83	049-133-843	each	£11.00
3 Diesel, >7/81	113-129-620	each	£5.50
Diesel inc. TF, 8/81>	069-129-620	each	£7.70



UPGRADES & CUSTOM PARTS

**K&N FILTERS
PANEL FILTERS**



1	1100/1300cc, (round 229mm dia.)	WC129KNE-2585	each	£36.50
2	1100/1300cc, (rectangular)	WC129KN33-2001	each	£43.00
3	1600/1800ccm, Carb Models	WC129KN33-2092	each	£33.30
4	1600-1800cc GTI	WC129KN33-2002	each	£49.65

UPGRADES & CUSTOM PARTS

**PIPERCROSS FILTERS
PANEL FILTERS**



1	1100/1300cc, round	WC129PX1224	each	£36.50
2	1100cc, 1500cc, D/TD	WC129PP38	each	£36.50
	1500-1800cc Carb, oblong type	WC129PP1217	each	£36.50
	1600-1800 Gti, >8/83 inc. Cabrio Gti >93, oblong type	WC129PP1359	each	£36.50

UPGRADES & CUSTOM PARTS

**PIPERCROSS FILTERS
INDUCTION KITS**



1	1600-1800cc Gti	WC129PK051C	each	£101.80
2	1800cc 16v	WC129PK056C	each	£101.80
	1800cc G60	WC129PK061B	each	£91.30

UPGRADES & CUSTOM PARTS

**K&N FILTERS
BOLT ON FILTERS**



1	1100/1300/1500/1600cc, Solex PIC/PICT Carb	WC129KNRA-071V	each	£43.00
2	1500/1600cc, Solex Zenith 2B Carb	WC129KN56-9049	each	£60.20
3	1300/1600/1800cc, Pierburg 2E3 Carb	WC129KN56-9159	each	£65.10

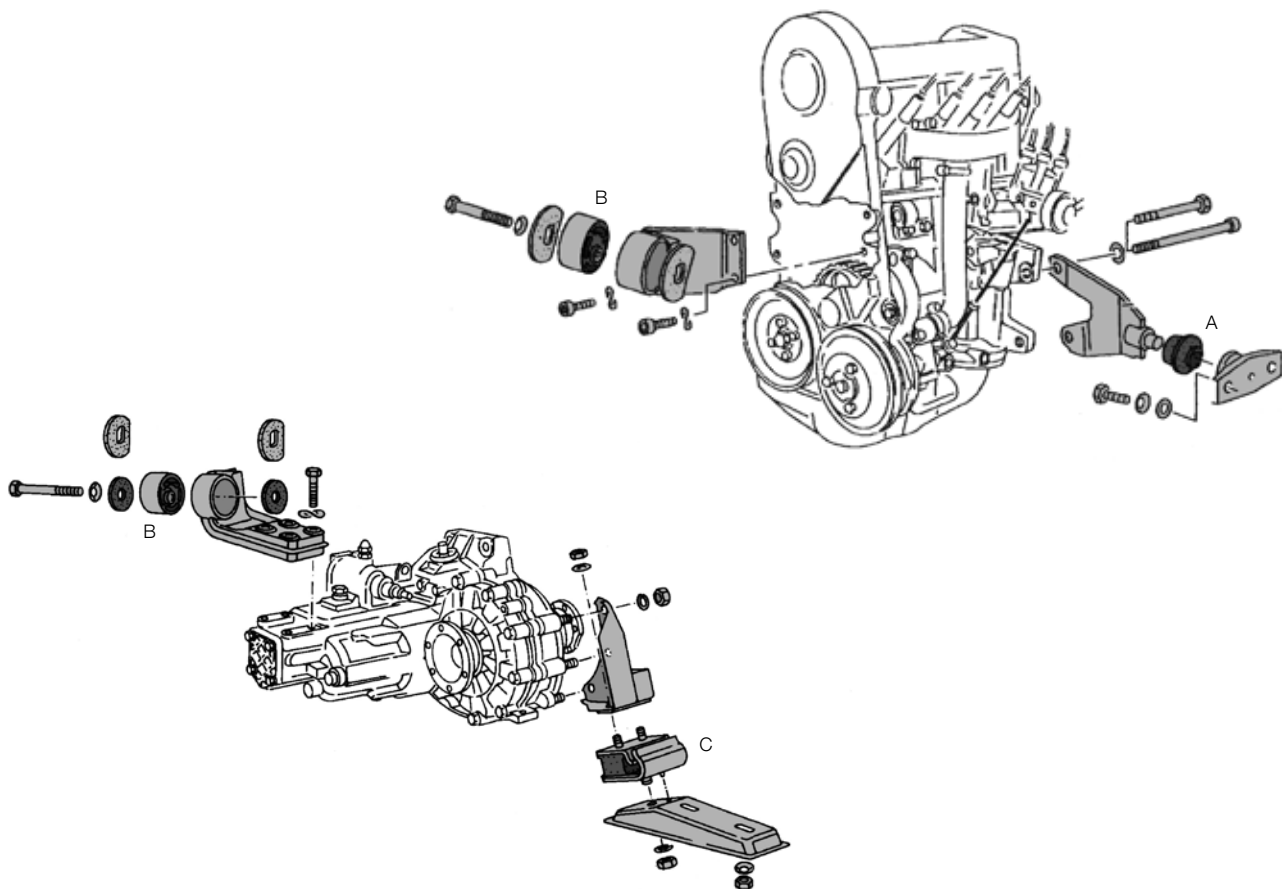
UPGRADES & CUSTOM PARTS

CLEANING KITS



1	K&N Filter Cleaning Kit	WC129KN995000	each	£14.00
2	PiperCross Filter Cleaning Kit	WC129PKC9000	each	£12.10





Please call to check for availability of bolts, washers and nuts for engine and gearbox mounts

FRONT ENGINE MOUNT - A



All models 171-199-339 each **£3.90**

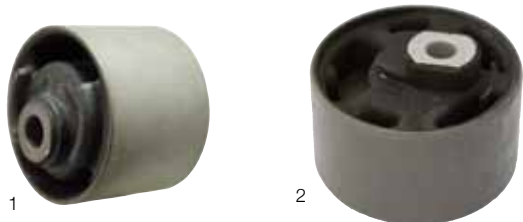
REAR GEARBOX MOUNT - C



Petrol models	171-199-151/A	each	£12.00
Diesel models	171-199-151/B	each	CALL

RIGHT ENGINE MOUNT / FRONT GEARBOX MOUNT - B

This mount is used for both applications, please check measurements.



1	60.4mm	171-199-214	each	£12.60
	64.4mm	171-199-214/D	each	£12.60
2	74.6mm	171-199-214/G	each	£14.00

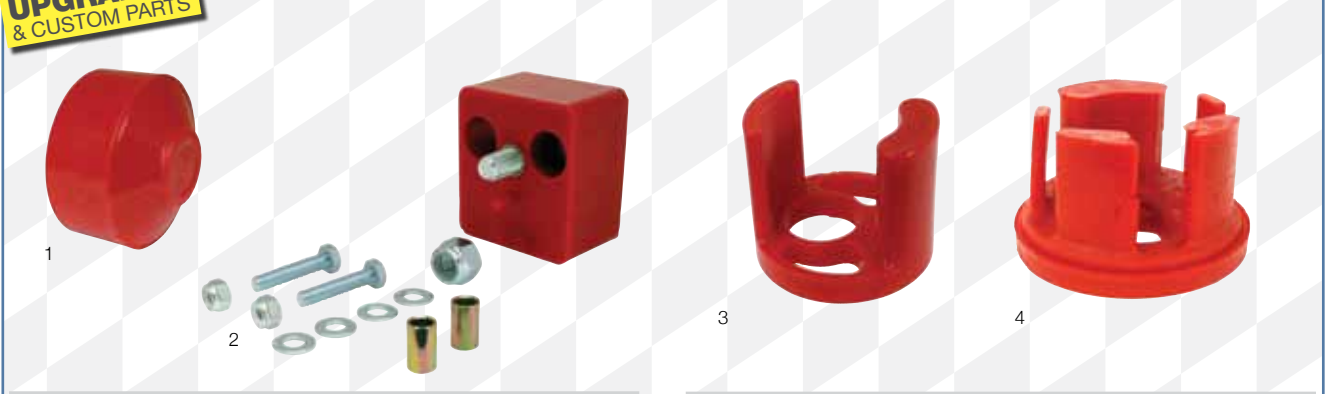
EXHAUST MOUNTS



1	4-Way Type	191-253-147/B	each	£0.95
2	Round type	893-253-147/F	each	£1.10

**UPGRADES
& CUSTOM PARTS**

BUGPACK UPRATED MOUNTS



1	Front	WC19922-501	each	£16.10	3	Side Insert, 76-79, 64.4mm	WC19922-504	each	£6.00
2	Rear	WC19922-502	each	£26.90	4	Side Insert, 80-84, 74.6mm	WC19922-505	each	£6.00



FUEL

Are you using the correct fuel for your Golf? All GTI models need 98ron super unleaded or you'll risk damage to the engine.

When was your fuel filter last changed? It can make a huge difference!



Not getting fuel to the engine? Carb models have a mechanical pump on the engine. Injection models have an external pump by the tank.

Please call to check availability of fuel hoses for diesel and injection models.

MECHANICAL



>1300cc carb, 74-87	052-127-025/B	each	£16.00
1 1500-1800cc carb, 74-92	026-127-025/A	each	£45.10
Pump Gasket, >1300cc 74-86	052-127-311	each	£0.70
2 1500-1800cc	049-127-311	each	£0.80

INJECTORS

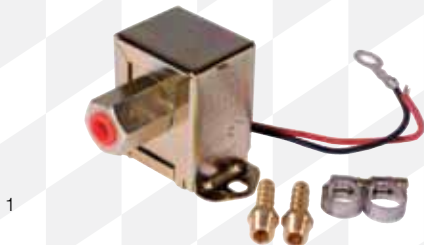


Please use this list as a guide, and check what size injectors, and how many seals and inserts you have fitted on your engine to avoid complications.

1 Injector >7/84	049-133-551/A	each	£55.20
Seal for above,	034-133-557/E	each	£0.95
Insert for above, 1600cc, 1800cc >7/82	063-133-555	each	£8.95
1800cc 8/82-	063-133-555/A	each	£8.95
2 Injector 8/84-7/85 and 1800cc 16v all, m12x1.5	026-133-551	each	£95.00
Seal, upper	035-133-557/A	each	£0.95
Insert, upper	034-133-555/A	each	£9.95
Insert, lower	035-133-554	each	£1.50
Seal, lower	035-133-557	each	£0.95
Injector, 8/85>, m10x1.5	035-133-551/F	each	£0.00
3 Seal for above	034-133-557/E	each	£0.95
Secondary seal	N01-384-43	each	£0.50
Injector, GTI 8v digitant injection	037-906-031/P	each	CALL
4 Seal set (top and bottom)	030-198-031	each	£4.95
Insert	037-133-555/A	each	£4.95
Injector, G60	037-906-031/D	each	CALL
Seal set for above, per injector	030-196-031	each	CALL
Insert for above	037-133-555/A	each	£4.95

UPGRADES & CUSTOM PARTS

ELECTRIC FUEL PUMPS



1 Facet Electric Pump, including fittings	AC127200	each	£44.95
Rubber mounts for facet pump	AC1159259	each	£4.00

FUEL INJECTION MODELS



Some Fuel pipes are available for injection models, please call with your requirements and we can check price and availability for you.

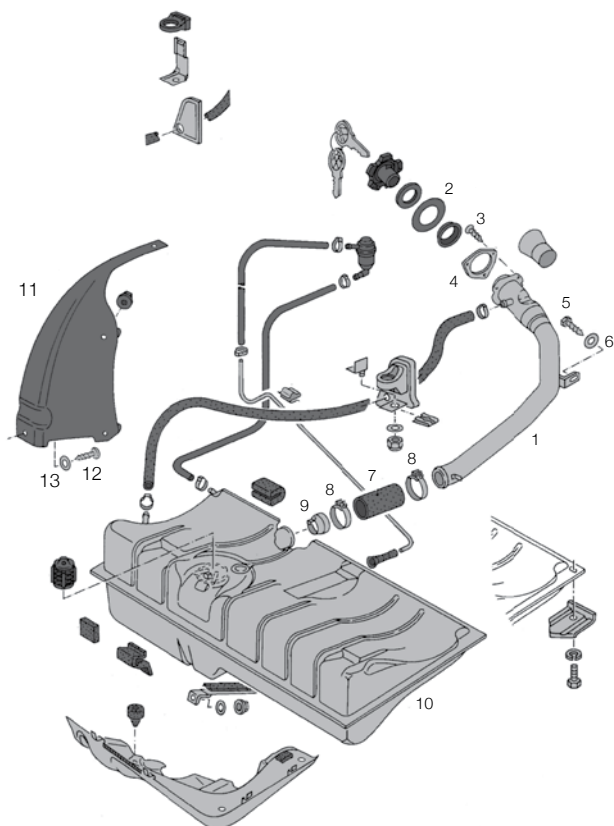
1 Fuel pump, 1600-1800cc GTI 8/76-	171-906-091/A	each	£99.00
Fuel pressure accumulator 1600cc 8/76-7/79	431-133-441/B	each	CALL
2 1600cc 8/79-1800cc	431-133-441/C	each	£163.80
	447-133-441	each	CALL
Sound absorber for electric fuel pumps 8/76-	155-201-769	each	CALL

FUEL HOSE



Rubber Fuel Hose 5mm	N90-099-601	each	£3.00
7mm	N02-028-11	each	£2.50
Stainless steel, over-braided Hose 6mm	AC127812	each	CALL
1 8mm	AC127800	each	£15.00
2 Hose Clips, S. Steel	AC1279224	each	£2.50

FUEL TANKS



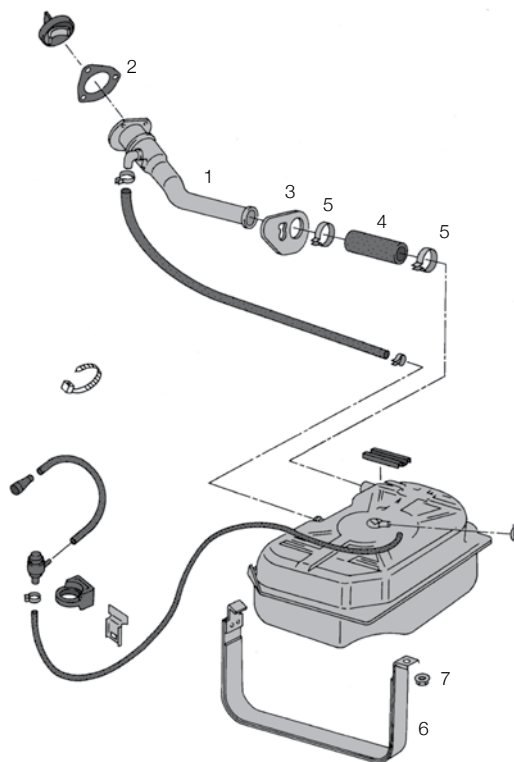
1 Filler neck Golf, Jetta Cabriolet 8/83-, may require longer hose Scirocco 8/83-	171-201-129/F 155-201-129/C 533-201-129/A	each each each	£50.00 £94.60 CALL
2 Protective ring, filler neck to body	171-201-681/D	each	£8.30
3 Screw, filler neck top to body	N01-399-81	each	£0.23
4 Seal filler neck top to body, carb models Seal filler neck to body, GTI models only	171-201-119/F 171-201-119/E	each each	£21.65 £10.95
5 Screw filler neck to inner arch	N01-594-61	each	CALL
6 Washer for above	N01-166-615	each	£0.30
7 Hose, filler neck to tank	N90-196-01	each	CALL
8 Hose clip for above, 2 req	N02-450-77	each	£3.30
9 Pipe insert with flap,	171-201-285/A	each	CALL
10 Fuel tank Carb models Diesel / injection Cabriolet / Scirocco 8/83-	171-201-075/P 171-201-075/Q 155-201-075	each each each	£88.00 £88.00 £109.60

Breather hose per metre (7mm x3mm wall)	N02-028-11	each	£2.50
per metre (13.5Mmx3mm)	N10-123-801	each	£33.95
Hose clips for above 12-22mm	N10-258-201	each	£3.30
Gravity valve, carb / diesel injection	161-201-753	each each	CALL CALL

FUEL TANK FITTINGS

Fuel tank strap kit	171-201-651	kit	£16.70
Securing nut for above	N02-214-64	each	£0.65
Washer for above	N01-152-520	each	£1.00
11 Corner clamping plate, 8/83-	533-201-633	each	CALL
12 Bolt for above	N01-024-222	each	£0.80
13 Spring washer for above	N01-203-87	each	£0.60

CADDY FUEL TANKS



1 Filler neck, caddy	147-201-129/C	each	CALL
2 Seal, filler neck to body	175-201-119/A	each	CALL
3 Grommet, filler neck through chassis	147-201-119	each	CALL
4 Hose, filler neck to tank	N90-196-01	each	CALL
5 Hose Clip for above, 2 req	N02-450-44	each	£1.50
6 Fuel tank strap, Caddy, 2 req	147-201-651/A	each	CALL
7 Nut for above	N01-100-830	each	£0.50

DIESEL INJECTION

Injector CK engine code >7/80 CPV/ JK code 8/80- Turbo Diesel CY code, 81-83	068-130-201/X 068-130-201/EX 068-130-201/BX	each each each	CALL CALL NCA
Sealing washer, injector to head, all years	068-130-219	each	£1.10
Diesel Filter >7/89 8/89>	068-127-401 1H0-127-401/C	each each	CALL £6.30
Valve for diesel pre heater	191-127-247/A	each	£5.50

PETROL FUEL FILTERS



1 1000-1800cc, carb models, 74-93	251-201-511/G	each	£2.75
GTI models >7/76 -7/83, Scirocco 16v	067-133-511 431-133-511	each each	CALL £24.70
Cabriolet GTI >7/83, Caddy-7/87 8/83-, Caddy 8/87-	431-133-511/D 893-133-511	each each	£13.20 CALL
3 Cabriolet 8/83-	533-201-511/A	each	£32.60
Cabriolet, digifant injection	1H0-201-511/A	each	£9.90



EXHAUSTS

Got a Cabriolet or Scirocco? The exhaust mounts changed in 1983, check your chassis number if you are unsure which year yours was made.

Think long term - stainless steel exhausts are forever and will only add value to your car.



Want to release more power?
A stainless steel 4 branch manifold will do just that.

GOLF



1	Front Downpipe Mk1 / Golf / Jetta / Cabriolet 1.6-1.8	171-253-091/A	each	£67.00
	Front pipe 1100cc-1300CC Mk1 Golf	861-253-101/AD	each	£59.10
	Mk1 1000cc >7/79	036-253-103	each	£45.70
	Mk1 1500-1800	171-253-091/E	each	£51.60
	Carb 1500cc >7/80 1600cc 8/75-7/77	055-253-091/N	each	£132.40
	GTI >7/83 & some J & S carb models	161-253-091/C	each	£103.90
	Diesel 8/79-12/83	161-253-091/A	each	£51.60
	Front silencer Mk1 GTI and Turbo diesel 3/82-12/83	171-253-209	each	£54.00
	GTi 1/84-7/87	191-253-209/B	each	£30.00
	Intermediate pipe Golf/Jetta 1100cc >1979	036-253-201	each	£63.20
2	1500-1600	055-253-201/C	each	£19.30
	Rear Silencer Golf Mk1/Scirocco 1100cc-1600cc Carb & Diesel	171-253-609/C	each	£46.00
	GTi / GLi 8/82-12/83	171-253-609	each	£59.00
	Golf/Scirocco GTI/GLi >7/82	171-253-609/A	each	£65.10

SCIROCCO



	Front Downpipe Mk1 / Golf / Jetta / Cabriolet 1.6-1.8	171-253-091/A	each	£67.00
	GTI >7/83 & some J & S carb models	161-253-091/C	each	£103.90
	Mk1 1500-1800	171-253-091/E	each	£51.60
	Intermediate pipe, 1500-1600	055-253-201/C	each	£19.30
	Rear Silencer Golf Mk1/Scirocco 1100cc-1600cc Carb & Diesel	171-253-609/C	each	£46.00
	Golf/Scirocco GTI/GLi >7/82	171-253-609/A	each	£65.10

CABRIOLET



1	Front Downpipe Mk1 / Golf / Jetta / Cabriolet 1.6-1.8	171-253-091/A	each	£67.00
	Front pipe Mk1 1500-1800	171-253-091/E	each	£51.60
	GTI >7/83 & some J & S carb models	161-253-091/C	each	£103.90
	Front silencer Mk1 GTI and Turbo diesel 3/82-12/83	171-253-209	each	£54.00
2	Rear silencer Mk1 GTI / GLi 8/82-12/83	171-253-609/L	each	£59.00
	Golf/Scirocco GTI/GLi >7/82	171-253-609/A	each	£65.10
	Golf Mk1/Scirocco 1100cc-1600cc Carb & Diesel	171-253-609/C	each	£46.00

CADDY

	Front pipe, mk1 1500-1800	171-253-091/E	each	£51.60
	Front exhaust silencer	161-253-209	each	£39.80
	Intermediate pipe	147-253-201	each	
	Rear exhaust silencer	147-253-609	each	£0.00

JETTA



	Front downpipe Mk1 / Golf / Jetta / Cabriolet 1.6-1.8	171-253-091/A	each	£67.00
	Front pipe Mk1 1500-1800	171-253-091/E	each	£51.60
	GTI >7/83 & some J & S carb models	161-253-091/C	each	£103.90
	Front silencer GTI 1/84-7/87	191-253-209/B	each	£30.00
	Mk1 GTI and Turbo diesel 3/82-12/83	171-253-209	each	£54.00
	Intermediate pipe Golf/Jetta 1100cc >1979	036-253-201	each	£63.20
	Intermediate pipe, 1500-1600	055-253-201/C	each	£19.30
	Rear silencer Golf/Scirocco GTI/GLi >7/82	171-253-609/A	each	£65.10
	Golf Mk1/Scirocco 1100cc-1600cc Carb & Diesel	171-253-609/C	each	£46.00

EXHAUST MOUNTS, GASKETS, RUBBER'S



Exhaust rubber			
1	4 way type	191-253-147/B	each £1.50
	Round	893-253-147/F	each £1.10
2	Corrugated pipe , 1100cc/1300cc 79-83	867-253-177	each £25.80
Exhaust downpipe gasket			
3	1100-1300 8/79-10/91	036-253-115/A	each £4.50
	golf mk1 1.5-1.6 74-83	841-253-115/B	each £4.40
	1600-1800 golf gti	055-253-115/A	each £5.00
Exhaust gasket , all inline 4 cul eng, 1000cc> incl. Diesel			
		028-129-589/B	each £1.70
4	Exhaust mounting kit , a.5 / 1.6 D / td	161-298-115	each £9.00

UPGRADES & CUSTOM PARTS PERFORMANCE EXHAUST MANIFOLDS & ACCESSORIES



Therмотec wrap			
	2" black 50'	AC251004	each £95.50
	1 Natural 50'	AC251001	each £63.40
1	2 Natural 50'	AC251003	each £87.10
2	Therмотec snap strap kit (12 x 9 straps)	AC251006	each £51.60
Polybush Exhaust rubber			
3	4 Way type, Black OEM+ Polyurethane	WC253EXH006	each £6.60
4	Donut type, Black OEM+ Polyurethane	WC253EXH007	each £6.60
	1800cc 8v model	WC251638	each
	1800cc 16v conversions	WC251639	each

EXHAUST CLAMPS

1	49.5mm	165-253-139	each £3.00
	54.5mm	191-253-139/G	each £3.30
2	59.5mm	1H0-253-139/D	each £3.30
3	55-59mm stainless	WC253T400	each £5.50

UPGRADES & CUSTOM PARTS

JETEX



Exhaust system, Jetex,			
1	Racing Mk1 Golf >83, Stainless	WC253J29-H6R	each CALL
2	Single Round 80MM G1>83/Sci mk1	WC253J29-H	each CALL
3	Single Oval 70/90MM, G1 >83/Sci mk1	WC253J29-H5	each CALL
	80mm Round, Golf Mk1 Cab/Sci Mk2	WC253J29-H2	each CALL
Twin Oval 70/90MM			
	Cabriolet >88		
	Scirocco 84-92	WC253J29H8	each CALL

OVERSEAS ORDERING?
MOST PARTS ARE AVAILABLE FOR INTERNATIONAL SHIPPING



TRANSMISSION AND DRIVETRAIN

Don't forget your gearbox oil.
When was it last changed?



Need a clutch cable or pedal rubber?
Look in the cables and controls section.

Need CV joints? Measuring your
old ones will ensure we can supply
the right one first time.

Not taken your old clutch out yet?
Your full chassis and engine number
will help us identify which one you need.

STANDARD CLUTCH KITS



1



2



3

Clutch Kit

1	180mm Mk1 1.1-1.3 4/74-7/83 Mk2 1.0 11/83-	052-198-141/A	each	£73.00
2	190mm, Mk1 1.5/1.6 Incl Diesel/GTI/Sciroc	055-198-141/A	each	£72.40
2	200mm, Mk1 1.6/1.8 Incl Diesel & some GTI	068-198-141/A	each	£86.10
3	210mm, Mk1/2 Most 1.8 exc. 16v/G60/Rallye	027-198-141/A	each	£77.00
	Clutch Disc, 200mm, Golf Mk1/Mk2 1.6D/TD	068-141-031/T	each	£27.40

UPGRADES & CUSTOM PARTS

BLACK DIAMOND CLUTCH KITS



Clutch Kit Black Diamond Mk1,
1.8 8/82-7/91 ex 16v/G60/Ra

WC141DPC8013

each **£156.50**

CLUTCH ALIGNMENT TOOLS



1



2

All models exc. 16v

WC0005378

each **£4.40**

100/1100/1300cc models

AC000143

each **£3.50**

CLUTCH PUSHROD



1



2

1 **4 Speed models**

020-141-741

each **£4.95**

2 **5 speed models**

020-141-741/B

each **£4.95**

CLUTCH AND GEARBOX COMPONENTS



Inspection plug for gearbox			
1	most	020-301-132	each £2.20
2	1.1/1.3 4 speed	084-301-115	each £5.00
Cover for clutch release bearing,			
3	5 speed manual	020-141-073/A	each £8.80
4	Clutch guide tube/sleeve, 1600-1800cc	020-141-181	each £3.90
Release bearing, engine codes: FA, FJ, GF, GG 084-141-165/B			
			each £40.80
Oil seal for shift rod, all manual models			
		020-301-227/C	each £7.50
5	Gearbox flange seal	020-301-189	each £1.50

DRIVETRAIN MANUAL



1	Front wheel hub	175-407-615	each	£17.50
2	Front wheel bearing kit	171-498-625/D	each	£16.00
3	Front hub nut	171-407-643/A	each	£6.10
4	Thrust washer for Front Hub Nut	171-407-277	each	£2.20
CV Joint,				
	Outer Kit, 83mm Diameter. 50mm Seal Diameter	171-498-099	each	£33.00
	Outer Kit, with boot and grease	171-498-099/B	each	£35.00
	Outer Kit 81mm. GTI	191-498-099/F	each	£23.70
5	92mm Inner, MK1/MK2 1.0 - 1.3 74-10/9	171-498-103/D	each	£35.00
	94mm Inner MK1 1.5-1.8 & Mk2 1.5-1.6 & s	171-498-103/C	each	£35.00
CV Boot				
6	Outer 81mm	171-498-203/S	each	£8.50
	Inner 92mm	171-498-201/A	each	£10.00
	Inner 94mm	191-498-201/D	each	£8.00
	Inner Left, Cabriolet Only 100mm	1K0-498-201	each	£13.00
	Inner Right, Cabriolet Only 100mm	191-498-202/A	each	£13.00
7	Gearbox drive flange seal	020-301-189	each	£1.50
8	Sealing bush on Gearbox	020-301-227/C	each	£7.50

DRIVETRAIN AUTOMATIC



1	Filter for automatic transmission fluid	010-325-421/A	each	£7.20
2	Gasket for oil strainer	010-325-443	each	£1.00
	Sump gasket	010-321-371/B	each	£19.50



STEERING AND SUSPENSION

Replacing your suspension - make sure you renew the top mounts at the same time.



After fitting new suspension or steering components get your tracking setup correctly or you'll be wearing tyres out before you know it!

Want to fit a new steering wheel - check to see if your car is large or small spline.

Check out our brand new range of OEM look polyurethane bushes.



Front Wishbone
171-407-153/DAS
£53.70 each



Front Top Mount
171-412-329/A
£15.00 each



OEM+ Polybush suspension bush kit
WC407G100
£265.96

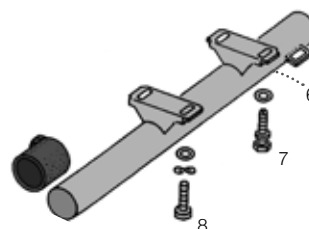
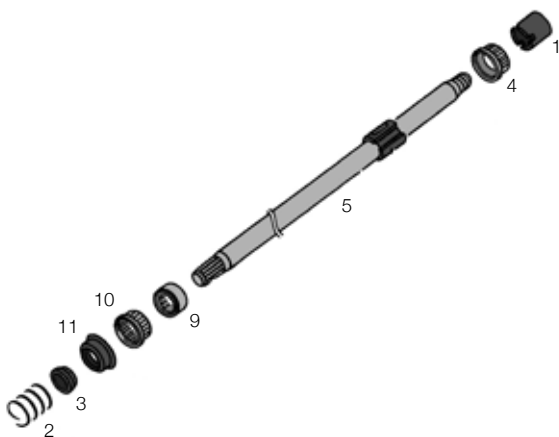


Rear Shock Absorber Gas Filled
171-513-031/C
£30.00 each



Rear Wheel Bearing Kit
311-498-017/B
£9.50

STEERING COLUMN



2



1

Shouldered nut for steering wheel, M16	n01-164-15	each	
Washer for above	n01-223-85	each	
1 Spacer sleeve on steering column	171-419-549	each	£7.70
2 Pressure spring - base of steering tube			
LHD	171-419-343/A	each	
RHD	481-419-343/B	each	
3 Support ring for base of column	171-419-539	each	
4 Support ring for top of column	171-419-341	each	£3.90
5 Steering column, LHD	171-419-503/A	each	
6 Steering column tube	171-419-563/C	each	
Bolts			
7 upper	411-417-549	each	£5.00
8 lower	n01-470-91	each	£1.20
9 Needle Bearing race , base of column	171-419-518/A	each	
Needle Bearing , base of steering column			
10 tube LHD	171-419-517	each	
11 Ball bearing , for beneath the above	171-419-517/B	each	

STEERING



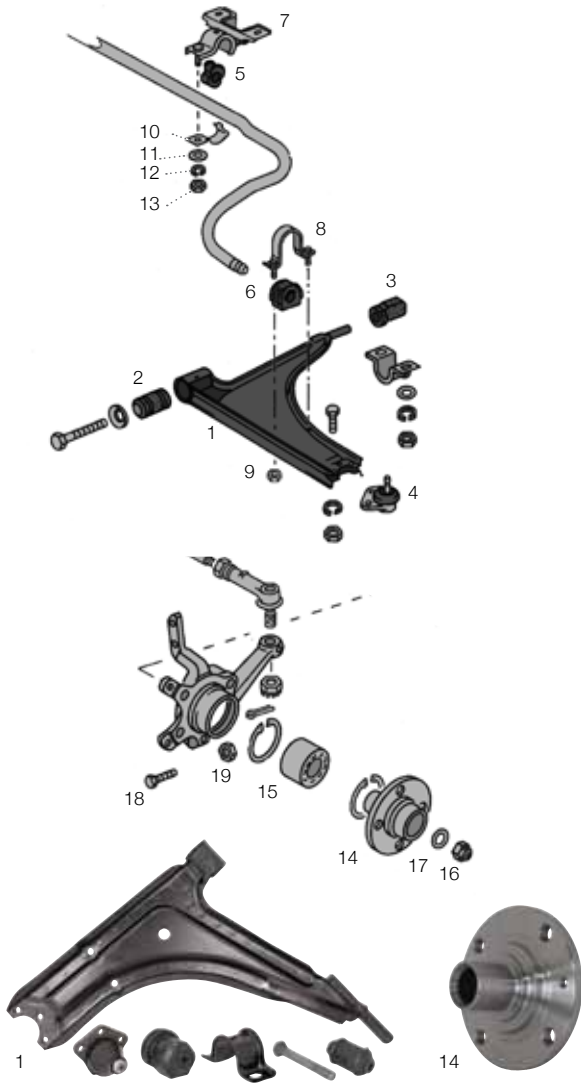
Steering Rack			
1	LHD	171-419-063	each £64.50
2	RHD	172-419-063	each £74.00
Steering Rack Rubber Mount,			
3	Left	171-419-883	each £3.30
4	Right	171-419-884	each £3.30
5	Clamp for above	171-419-875	each
6	Nut for above, M8	N02-214-64	each £0.65
7	Washer for above	N01-152-520	each £1.00

8	Tie Rod, Complete, Left or Right	171-419-804	each £20.40
Replacement track rod end for above,			
9	R/H Thread	251-419-811	each £9.95
Steering Rack Boot,			
10	Left	191-419-831	each £7.00
	Right, >1/87	171-419-832/C	each £5.95
11	Clip for steering boot	171-419-838	each £0.70
12	Steering Shaft with Universal Joint, RHD only	172-419-951/B	each £244.90
13	Boot for Steering column, LHD non PAS	171-419-523/A	each £23.25
	Boot for Steering column, RHD non PAS	172-419-523	each £37.30



STEERING AND SUSPENSION

FRONT WISHBONES & ANTI-ROLL BAR



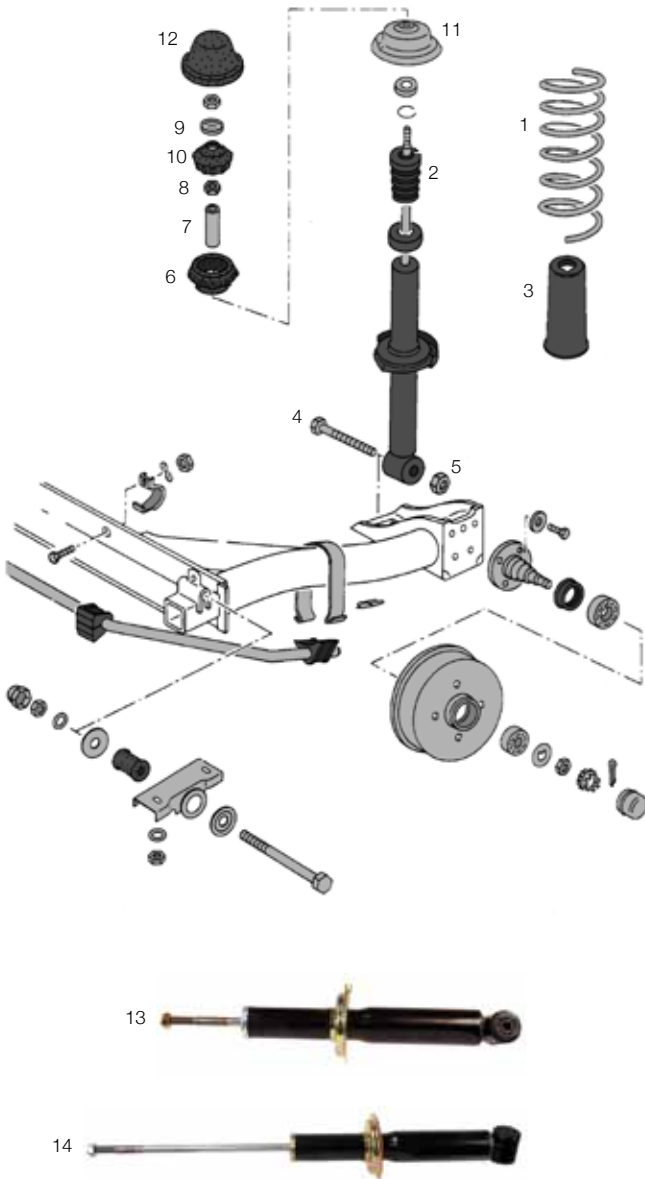
1 Front Wishbone L or R, Bare L or R, includes bushes and ball joints	171-407-153/D 171-407-153/DAS	each each	£20.00 £53.70
Wishbone Bushes,			
2 Front 32mm L or R	171-407-182/D	each	£2.50
3 Rear L or R	171-407-181/A	each	£5.00
Front Ball Joint			
4 L or R -17mm comes with hardware	171-407-365/FG	each	£34.96
Front Anti-Rol Bar Bush			
5 Inner	171-411-313	each	£7.80
6 Outer	171-411-314/A	each	£9.30
Front Anti-Roll Bar Mount/Clip			
7 Inner	171-411-331	each	£0.00
8 Outer	171-411-333/A	each	£13.10
9 Front Roll bar outer mount nut	N02-214-64	each	
10 Front Roll bar inner mount clip	171-411-337	each	£2.80
Front Roll bar inner mount			
11 Washer	N01-152-520	each	£1.00
12 Spring ring	N01-203-87	each	£0.60
13 Hexagonal nut	N01-100-88	each	£0.30
14 Front Wheel Hub	175-407-615	each	£17.50
15 Front Wheel Bearing Kit	171-498-625/D	each	£16.00
16 Front Hub Nut	171-407-643/A	each	£6.10
17 Washer (for above)	171-407-277	each	£2.20
18 Bolt , bottom of bearing housing	N03-477-84	each	£5.00
19 Nut (for above)	N02-119-55	each	CALL

FRONT SUSPENSION



1 Top Mount , 84> (not G60)	171-412-329/A	each	£15.00
2 Suspension strut top cover	171-412-359/01C	each	£3.60
3 Top Mount Kit , (mount, bump stop, protective cap)	171-498-329/A	each	£16.00
4 Bumpstop , front all MK1	171-412-303/C	each	£5.50
5 Protective Boot , dust cover	171-412-135	each	£4.50
6 Spring Cap 80>	171-412-341/A	each	£0.00
7 Spring , most models exc. Gti	171-411-105/G	each	£30.00
8 Shock absorber insert Meyle Oil filled Oil-Sachs/Boge	171-412-032/G 171-412-031//2	each each	£32.00 £44.10
9 Front Strut Bottom Bolt (1 req per side)	133-513-471	each	£7.70
10 Front Strut Bottom Nut (1 req per side)	N01-113-51	each	£1.80
11 Front Strut Eccentric Bolt	171-407-265	each	£14.00
12 Front Strut Eccentric Washer	171-407-267	each	£1.30
13 Tool for removing the slotted McPherson Strut Nut	WC0002941	each	£10.50

REAR SUSPENSION - GOLF/SCIROCCO/JETTA



1	Rear spring	171-511-105/H	each	£33.00
2	Rear bump stop	171-512-131/B	each	£6.00
3	Rear shock dust covers (110mm)	171-513-425	each	£5.00
4	Lower shock absorber bolt m10x70	N01-047-07	each	£3.90
5	Nut for above	N10-209-005	each	£0.80
6	Lower top bushing for shock	171-512-333	each	£9.90
7	Spacer sleeve	171-512-117	each	£0.00
8	Nut (15 on etka)	N01-101-15	each	£1.70
9	Support washer for top of shock	171-512-337	each	£3.00
10	Upper top bushing for shock	171-512-335	each	£8.30
11	Top cap	823-512-113	each	£14.00
12	Cover/cap for top of rear shock	171-512-135	each	£7.70
13	Rear Shock Absorber, Oil Filled	171-513-031/B	each	£30.00
14	Rear Shock Absorber, Gas Filled	171-513-031/C	each	£30.00

REAR STUB AXLE



1	Drum brake models, left or right	357-501-117	each	£26.00
	Bolt for stub axle	N90-369-801	each	£3.90
	Washer for above	321-501-119/A	each	£0.50
2	Rear wheel bearing kit, all models	311-498-017/B	each	£9.50

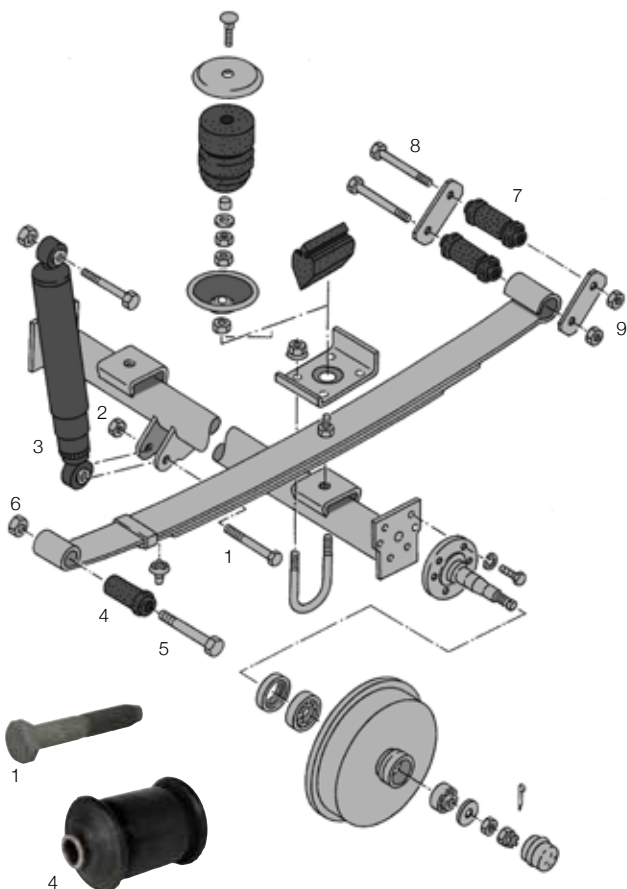
REAR AXLE



	Rear axle bush Golf			
	All models	161-501-537	each	£28.95
	Pivot bolt for rear axle M12x1.5x148	N04-015-73	each	£8.30
	Nut for above M12	N02-214-14	each	£1.10
	Rear axle to chassis bolt (3 per side)	N10-141-701	each	£2.25
	Rear Anti-Roll Bar Inner bush			
	18mm	161-511-413	each	£3.95
1	20.5mm	171-511-413	each	£7.70
	Rear Anti-Roll Bar Outer bush			
	18mm	161-511-437	each	£3.95
2	20.5mm	171-511-437	each	£12.00
	Rear Hub nut	N01-116-71	each	£2.95
3	Rear Anti-Roll Bar inner clamp	171-511-417	each	£10.50
	Bolt for above	N01-024-022	each	
	Washer for above	N01-224-110	each	£0.40
	Nut for above	N01-100-88	each	£0.30
4	Rear Anti-Roll Bar outer clamp	171-511-433	each	£15.10
5	Clip for above	171-511-453	each	£4.30



REAR SUSPENSION - CADDY



1	Rear shock bolt caddy	179-599-503	each	£8.30
2	Nut for above	N01-113-37	each	£0.70
3	Rear shock absorber	147-513-031/A	each	
4	Leaf spring rubber - front 86>	251-407-183	each	£8.50
5	Bolt for above >86 86>	179-599-501 N01-016-75	each	CALL £5.50
6	Nut for above - all years	N01-102-07	each	£1.70
7	Leaf spring rubber - rear, 2 per side	251-407-183	each	£8.50
8	Bolt for above	N01-018-91	each	
9	Nut for above	N01-102-07	each	£1.70
	Bump stop	179-511-353	each	
	U-bolt	281-599-173/C	each	
	Nut for above	N02-214-14	each	£1.10

UPGRADES & CUSTOM PARTS

SHORTER REAR SHOCK ABSORBERS



Note: when lowering the back of a Caddy you will need shorter shock absorbers. Use these Beetle shocks to do just that. You will need source or machine a bush for the bolt holes to stop excess movement.

Bugpack, 245/375mm	AC413650720	each	£57.60
KYBGR2, 245/385mm	AC41344068	each	£45.10

UPGRADES & CUSTOM PARTS

BUGPACK BUSHES

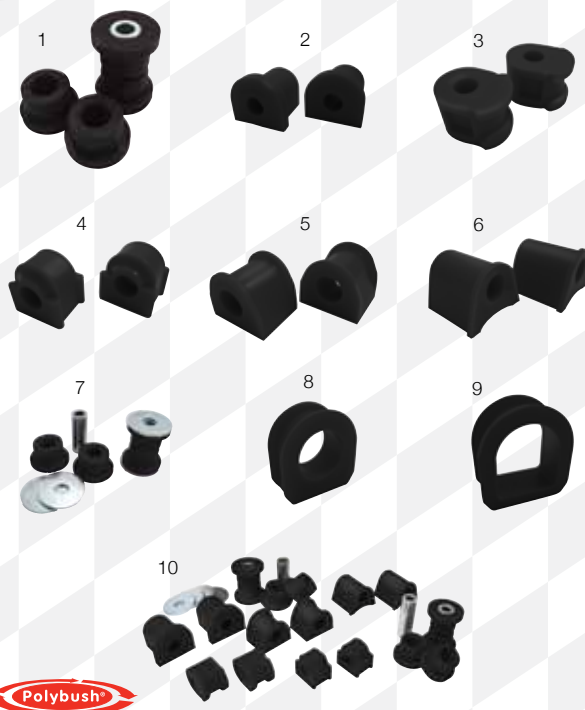


1	Front wishbone , front and rear bushes	WC4122-201	kit	£26.00
2	Steering rack bush kit	WC4122-701	kit	£10.00
3	Rear axle bush kit	WC4122-301	kit	£15.00
4	Rear shock absorber bushes	WC4122-901	kit	£16.00
	Complete Bugpack bush kit , includes all of above	WC4122-2008	kit	£110.20

UPGRADES & CUSTOM PARTS

OEM+ BUSHES

vwheritage OEM PLUS



1	Front Bush , front wishbone	WC407G101	kit	£48.95
2	Rear Bush , front wishbone	WC407G102	kit	£38.95
3	Inner Bush , front ARB	WC407G103	kit	£34.96
4	Outer Bush , front ARB	WC407G104	kit	£34.96
5	Inner Bush , rear ARB	WC407G105	kit	£25.96
6	Outer Bush , rear ARB	WC407G106	kit	£25.96
7	Rear Beam , mounting bush	WC407G107	kit	£59.94
8	Steering Rack Bush , left - arched hole	WC407G109	kit	£14.95
9	Steering Rack Bush , right - round hole	WC407G108	kit	£15.95
10	Steering Bush Kit , (exc. steering rack bushes)	WC407G100	kit	£265.96

**UPGRADES
& CUSTOM PARTS**

PERFORMANCE SUSPENSION KITS



KW Coilover Kits Variant 1

all models, excluding Caddy Cabriolet only
 WC412KW10280001 each **£850.00**
 WC412KW10280041 each **£850.00**

KW Coilover Kits Variant 2

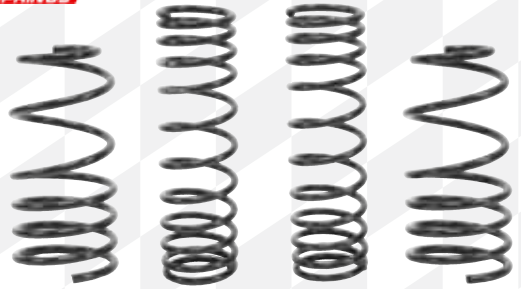
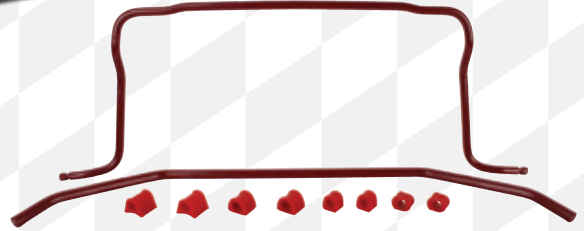
all models, excluding Caddy Cabriolet only
 WC412KW15280001 each **£1,086.30**
 WC412KW15280041 each **£1,086.30**

KW Coilover Kits Variant 3

all models, excluding caddy Cabriolet only
 WC412KW35280001 each **£1,351.50**
 WC412KW35280041 each **£1,351.50**

**UPGRADES
& CUSTOM PARTS**

**EIBACH SPRINGS
AND ARBS**



Eibach Anti-Roll Bar Kits

All models, non adjustable WC411E8501-320 kit **£357.40**

Eibach Pro Kit Lowering Springs

All models, -30/35 front, 35/40mm rear WC412E8501-140 kit **£173.20**

**UPGRADES
& CUSTOM PARTS**

WIECHERS STRUT BRACES



Front Upper Strut Braces

1pc Steel

1pc Aluminium

3pc Aluminium

1	all Incl GTI	WC411W511005	each	£78.70	WC411W512005	each	£115.50	WC411W512006	each	£135.40
2	16V Cabriolet	WC411W511007	each	£91.30	WC411W512007	each	£137.50			
		WC411W51104	each		WC411W512004	each	£134.40			

Front Upper Strut Braces

1pc Steel

3pc Steel

1pc Ali

3pc Ali

	Mk1 Scirocco			WC411W511023	each	£88.20				
	Mk1 Scirocco 16V	WC411W511007	each	£91.30			WC411W512007	each	£137.50	
										WC411W512023 each £130.40

Front Lower Strut Braces

Steel

Aluminium

3	>1300/ Auto	WC411W513002	each	£45.10	WC411W514002	each	£53.70
4	1500>	WC411W513001	each	£51.60	WC411W514001	each	£73.50

Front Lower Strut Braces

Steel

Aluminium

	Scirocco Mk1/2	WC411W513001	each	£51.60	WC411W514001	each	£73.50
--	----------------	--------------	------	---------------	--------------	------	---------------

Rear Upper Strut Braces

Steel

Aluminium

	All Models excl. Cab Scirocco	WC511W515001	each	£38.70	WC511W516001	each	£55.90
		WC511W515001	each	£38.70	WC511W516001	each	£55.90



BRAKES

Fit stainless steel brake hoses for improved pedal feel and better performance.



We sell copper nickel brake pipe kits, they don't rust!

Upgrade to drilled brake discs for better cooling, grooved for greater friction and an instant response. For the best of both worlds why not pick from the combi range.

Convert your 12mm disc model to vented discs simply by changing to the 239x20mm discs and pads to match - the calipers are the same.



**Brake Pipe Set
Copper Nickel**
171-698-500
£58.10



**16v 22.2mm
Master Cylinder**
1H1-611-019/B
£10.90



**Goodridge
Brake Hoses**
WC6980400-6P
£59.10 each



**Brake shoes
180x30mm**
191-698-051
£14.00 each



**Brake Cleaner
400ml Spray**
ML-014
£7.70 each

FRONT DISCS



1	239 X 10mm solid	811-615-301	each	£14.00
2	239 X 12mm solid	321-615-301	each	£12.00
3	239 X 20mm, vented	321-615-301/C	each	£17.50
	Screw for securing disc to hub	N10-648-301	each	£0.30

BRAKE CALIPERS AND FITTINGS



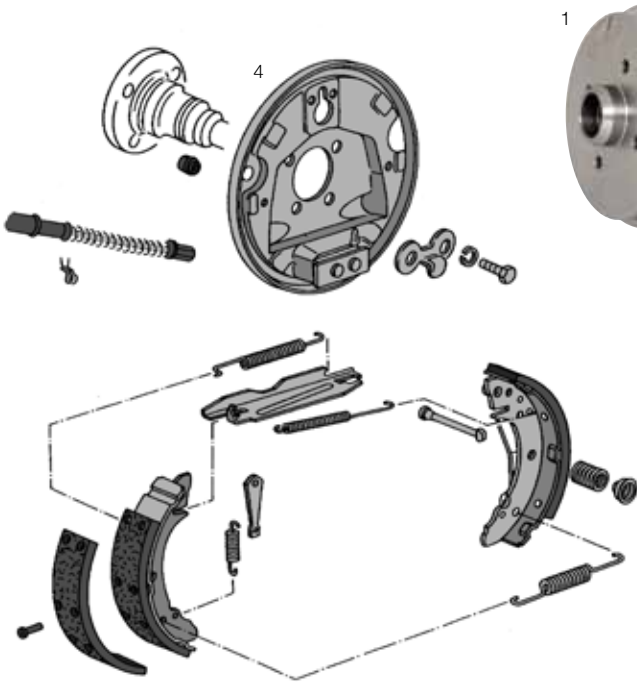
Caliper for 239 x 10mm discs			
1	Left - girling	171-615-107/D	each £104.90
	Right - girling	171-615-108/D	each £110.20
	Bolt for above	N90-068-902	each £3.35
Rubber guide sleeves			
2	for later mk1 Golf style calipers	171-698-447/A	each £21.50
Caliper for 239 x 12mm and 239 x 20mm discs			
3	Left	1H0-615-123/A	each £108.10
	Right	1H0-615-124/A	each £108.10
	Upper bolt for above (m8 x 55mm)	N04-475-53	each £0.85
	Lower bolt for above (m8 x 45mm)	N01-471-53	each £0.76
4	Backing plate, L & R	171-615-311/GEN	each £36.10
	Bolt for backing plate	N90-529-301	each £0.60
	Washer for above	N01-536-91	each £0.50

FRONT BRAKE PADS



1	Pads for 239 x 10mm discs, 2 pin fitting	861-698-151	each	£10.94
2	2 pin brake pads for all models apart from 1.8 GTI, 18.5mm	171-698-151/B	each	£8.90
	Pads for 239 x 12mm discs	191-698-151/J	each	£15.00
3	Pads for 239 x 20mm discs	191-698-151/G	each	£29.00

REAR DRUM BRAKES AND SHOES



1	Rear drum, 180 x 30mm	191-501-615/B	each	£16.00
2	Brake shoes for above	191-698-051	each	£14.00
3	Brake shoe fitting kit for 180 x 30mm	171-698-545	each	£10.00
	Rear Drum, 200 x 40mm	1H0-501-615/A	each	£25.20
	Brake shoes for above	1H0-698-071	each	£20.40
	Brake shoe fitting kit for 200 x40mm	1H0-698-545/A	each	£20.00
4	Backing Plate 82>			
	left	6N0-609-425/A	each	£75.00
	right	6N0-609-426/A	each	£75.00

UPGRADES & CUSTOM PARTS

REAR DISC BRAKE CONVERSION PARTS



These are all the parts you will need for converting your MK1 to rear disc brakes, using MK2 and MK4 upgrade parts.

1	Rear caliper, Golf Mk4 type				
	left	1J0-615-423	each	£120.00	
	right	1J0-615-424	each	£120.00	
	Brake pads for above	1J0-698-451/J	each	£15.50	
	Goodridge conversion hoses , stainless steel	WC6980506-2P	each	£40.80	
2	Rear discs - Mk2 Golf	357-615-601	each	£22.00	
3	Back plates - Mk2 GTI 88> spec				
	left	191-615-611/D	each	£29.94	
	right	191-615-612/B	each		
4	Mk2 Golf stub axles				
	left	333-501-117	each	£42.00	
	right	333-501-118	each	£42.00	
	Mk2 Golf caliper carrier , 2 required	443-615-425/A	each		
5	Handbrake cables - 16v Scirocco	533-609-721	each	£24.00	
6	GTI rear compensator	357-612-151	each	£59.00	
	Pressure regulator	841-612-151	each		
	Inner dust caps	191-501-639/A	each		
	Wheel bearing kit (per side)	191-598-625	each	£15.95	



REAR WHEEL CYLINDERS AND FITTINGS



Wheel Cylinder			
1	Rear, most drum models (14.29mm)	171-611-051/B	each £7.00
2	Rear, exc 1.1/1.3 (17.46mm)	331-611-051/A	each £11.00
3	17.46mm, for models with rear pressure regulator	6N0-611-053	each £6.50
Bolt for above		N01-475-06	each £0.60
Bleed nipple			
for Cast iron cylinders, M6x1		113-611-475	each £2.20
for aluminium cylinders, M7x1		3A0-611-475	each £2.20
Dust cover for above		211-611-483	each £0.55

MASTER CYLINDER AND FITTINGS



1	All models, 2/74-7/83, Mk1 Cab>84, RHD >90 - 20.64mm	171-611-019/E	each £35.00
	Cabriolet RHD 85> 90-92	171-611-019/N	each CALL
		1H1-611-019/C	each CALL
2	Mk2 16v/G60 - can be used as an upgrade 22.2mm	1H1-611-019/B	each £40.00
Gasket, master cylinder to servo		357-611-243	each £6.10
Plug, master cylinder to reservoir		211-611-817/A	each £5.50
Boot		171-611-195/A	each
Brake pressure regulator, G1		811-614-151	each £114.40

HANDBRAKE



1	Handbrake handle/lever	171-711-305/B	each £44.80
2	Cable for models with rear drums	171-609-721/C	each £12.00
Retainer for above		321-609-763	each
Washer for above		321-501-119/A	each £0.50
Bolt for above		N90-369-801	each £3.90
Hook for cable		191-609-657	each £1.25
Wire clip for cable		171-609-639/B	each

BRAKE FLUID RESEVOIR



Fluid Reservoir			
LHD	867-211-301/B	each	
RHD	321-611-301/J	each	
Reservoir cap			
1	for models with warning light warning light and level indicator, RHD, 43.5mm	1H1-611-349	each
		443-611-349/A	each
Seal for reservoir cap		893-611-347	each

SERVO



1	7" / 178mm Servo, Carb Engines, Diesel. LHD	811-612-107/A	each
	9" Servo, 1600-1800, K-Jet LHD + Golf Cab	171-612-107/G	each
	7" Servo, Carb Engines, Diesel. RHD	172-612-107/B	each £293.90
	8" Servo, 1600-1800cc, K-Jet. RHD	172-612-107/C	each £0.00
Nut			
M8	N01-100-88	each	£0.30
M10	N01-113-45	each	
2	Plug for servo - LHD, K-Jet	861-612-175	each £5.94

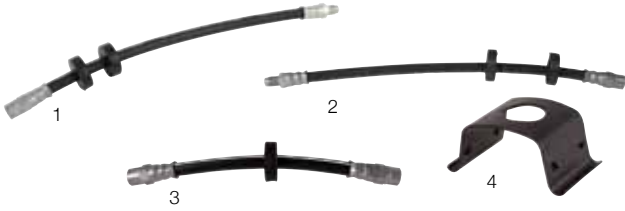
BRAKE PRESSURE REGULATOR



1	Regulator, all models where fitted 82>84	841-612-151	each
Bolt for above, M8x12		N01-023-76	each
Washer for above		N01-224-110	each £0.40



BRAKE HOSES



1	Front, all models exc 16v / G60, 335mm, R/H Thread	171-611-701/L	each	£9.50
2	Front, Girling, L/H Thread	171-611-701/K	each	£9.90
3	Rear Brake hose, 180mm	433-611-775/A	each	£10.20
4	Retaining spring clip, brake hose to brake pipe	803-611-715	each	£2.80

BRAKE PIPE SETS



1	Brake pipe set, Mk1 golf 8/79-7/83. Without pressure regulator on rear axle. Copper Nickel 6pcs	171-698-500	each	£58.00
	Retaining clip for brake pipe	803-611-715	each	£2.80

GOODRIDGE STAINLESS BRAKE HOSES



1	All models with rear drum brakes	WC6980400-4P	each	£59.10
2	Models with rear disks	WC6980400-6P	each	£85.70
	Mk4 golf rear caliper conversion hoses	WC6980506-2P	each	£40.80

UPGRADES & CUSTOM PARTS

BLACK DIAMOND PERFORMANCE DISCS AND PADS



Front Discs - Cross Drilled				
1	1.1 (8/78->), 1.3, 1.5 Diesel, 1.6 Diesel, 239mm	WC615KBD008	each	£95.50
	GTI 1.6, 1.8, 239mm	WC615KBD852	each	£111.30
Front Discs - Grooved				
2	1.1 (8/78->), 1.3, 1.5 Diesel, 1.6 Diesel, 239mm	WC615KBD008	each	£95.50
	GTI 1.6, 1.8, 239mm	WC615KBD852	each	£111.30



Front Discs - Grooved and Cross drilled				
3	1.1 (74-7/78), 1.5, 1.6, 1.8 (not Gti) 239mm	WC615KBD021	each	£95.50
	1.1 (8/78->), 1.3, 1.5 Diesel, 1.6 Diesel, 239mm	WC615KBD008	each	£95.50
	GTI 1.6, 1.8, 239mm	WC615KBD852	each	£111.30
Front Brake Pads - Mk1 Golf, Mk1/2 Sci				
All Models fitted with fixed calipers exc 1.5, 1.6 Carb				
		WC698PP018	each	£47.30
4	All Models fitted with sliding calipers exc. 1.3	WC698PP098	each	£30.10
	1.3 with sliding calipers	WC698PP110	each	£37.60
Brake Fluid, Black Diamond Dot 4				
		WC698FLUID	each	£11.00



WHEELS

Think outside the box. PCD adaptors to allow fitment of Porsche, Audi and newer VW model wheels.



Fitting spacers? Budget for longer wheel bolts for any spacer thicker than 3mm.

Fit radius wheel bolts on steel wheels and OEM alloys. Aftermarket wheels will use taper fit, get it wrong and your wheel could come loose!

A wise man once said "wheels maketh the car" he wasn't wrong.

UPGRADES & CUSTOM PARTS

ATS WHEELS

ATS Leichtmetallräder

1	Classic, 7x13", ET20	WC601A71320C	each	£164.80
	Classic, 8x13", ET0	WC601A81301C	each	£156.40
2	Centre Cap for Classic	WC601ACCCLA	each	£12.10
3	Cup, 7x15", ET20	WC601A71520CUP	each	£152.20
	Cup, 7x15", ET28	WC601A71528CUP	each	£161.70
	Centre Cap for Cup	WC601ACCCUP	each	£20.40

UPGRADES & CUSTOM PARTS

LENZO BSX WHEELS

LENZO

ADD "S" FOR SILVER, "BK" FOR BLACK, "G" FOR GOLD

1	7x15" ET20	WC601L1520	each	£120.70
2	7x15" ET38	WC601L1538	each	£120.70
3	7x16" ET25	WC601L1620	each	£151.20
	7x16" ET38	WC601L1638	each	£152.20
	Centre Cap for Lenzo BSX	WC601LBSXCAP	each	£55.90

UPGRADES & CUSTOM PARTS

RONAL WHEELS

RONAL

1	R10 Turbo, 7x15", ET28	WC601R715288T	each	CALL
2	Center Caps for R10 Turbo	WC601RCCR10	each	£16.10
3	LS, 7.5x15", ET25	WC601R71528LS	each	£150.10
	Centre Caps for LS	WC601RCCLS	each	£34.40

UPGRADES & CUSTOM PARTS

CALIBRE WHEELS

Calibre

1	Vintage, silver centred, 7x16" ET25	WC601300	each	£126.00
	Vintage, silver centred, 8x17" ET35	WC601301	each	£123.00
	Vintage, black centred, 7x16" ET25	WC601302	each	£121.80
2	Retrostar, black & polished, 7.5x15" ET35	WC601303	each	£96.00
3	Bomb, red & polished rim, 7x15" ET38	WC601304	each	£91.50
4	Eclipse, gold & polished rim, 7x15" ET38	WC601305	each	£87.00
	Eclipse, gold & polished rim, 7x16" ET38	WC601306	each	£94.50
5	Vice, black & polished, 7.5x15" ET35	WC601307	each	£88.50